



# Here for Good 2018-19 Annual Report to the Community



**MILWAUKEE**  
JEWISH FEDERATION

## What's Inside

- 2 WHO WE ARE
- 8 WHAT WE DO
- 21 HOW WE DO IT
- 24 FINANCIALS
- 26 OUR PEOPLE
- 29 OUR DONORS

# Here for good. A message from our leadership.

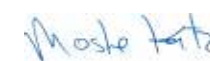
Since 1902 the Milwaukee Jewish Federation has pursued its mission of caring for the needs of the Jewish people and building a vibrant Jewish future in Milwaukee, in Israel and around the world.

We helped found and build a nation, free over a million Soviet Jews, and rescue thousands of Ethiopians. Here at home, we built an infrastructure — not just brick and mortar but also institutions — that cares for Jews, from infants to seniors and everyone in between.

Today we are growing all that our parents and grandparents built. We are also evolving to meet today's needs. Some needs have endured through the decades, but others — like community security and antisemitism — have rapidly become critical activities of the Federation.

Jews in Milwaukee, and hundreds of thousands more around the world, depend on the Milwaukee Jewish Federation. Thanks to a community of extraordinarily generous donors and volunteers, the Milwaukee Jewish Federation is here for good.

We're here to feed the hungry, comfort the sick and care for the elderly. We're here to educate our children and ensure a vibrant Jewish future. We're here to bridge cultural divides and speak out for what's right. We're here to support the people of Israel and strengthen our relationships with Jews everywhere they live. We're here for you and our community. We're here in Milwaukee, in Israel and around the world. We're here for good.



Moshe Katz  
Board Chair



Miryam Rosenzweig  
President and CEO



The Milwaukee Jewish Federation earned Charity Navigator's top rating of four stars for the seventh consecutive year.





# Local partner agencies

- Bader Hillel Academy
- BBYO-Wisconsin Region
- Harry & Rose Samson Family Jewish Community Center
- Hillel Foundation at UW-Madison
- Hillel Milwaukee
- Interfaith Conference of Greater Milwaukee
- Jewish Beginnings Lubavitch Preschool
- Jewish Family Services
- Milwaukee Jewish Day School
- Ovation Communities
- Yeshiva Elementary School



Who  
We Are

# Federation programs and services

- Annual Campaign
- Coalition for Jewish Learning
- Community Planning
- Israel Center
- Jewish Community Foundation
- Jewish Community Relations Council
- Jewish Museum Milwaukee
- Nathan and Esther Pelz Holocaust Education Resource Center
- Outreach and Engagement
- Security
- Teen Philanthropy
- Wisconsin Jewish Chronicle
- Women's Philanthropy
- Young Leadership





## Who We Are



## National partner agencies

American Jewish World Service  
BBYO  
Hebrew Immigrant Aid Society  
Hillel International  
Jewish Community Centers  
Association of North America  
Jewish Council for Public Affairs  
Jewish Federations of North America  
Jewish Telegraphic Agency  
Network of Jewish Family and Children's Agencies  
National Coalition Supporting Eurasian Jewry



## International partner agencies

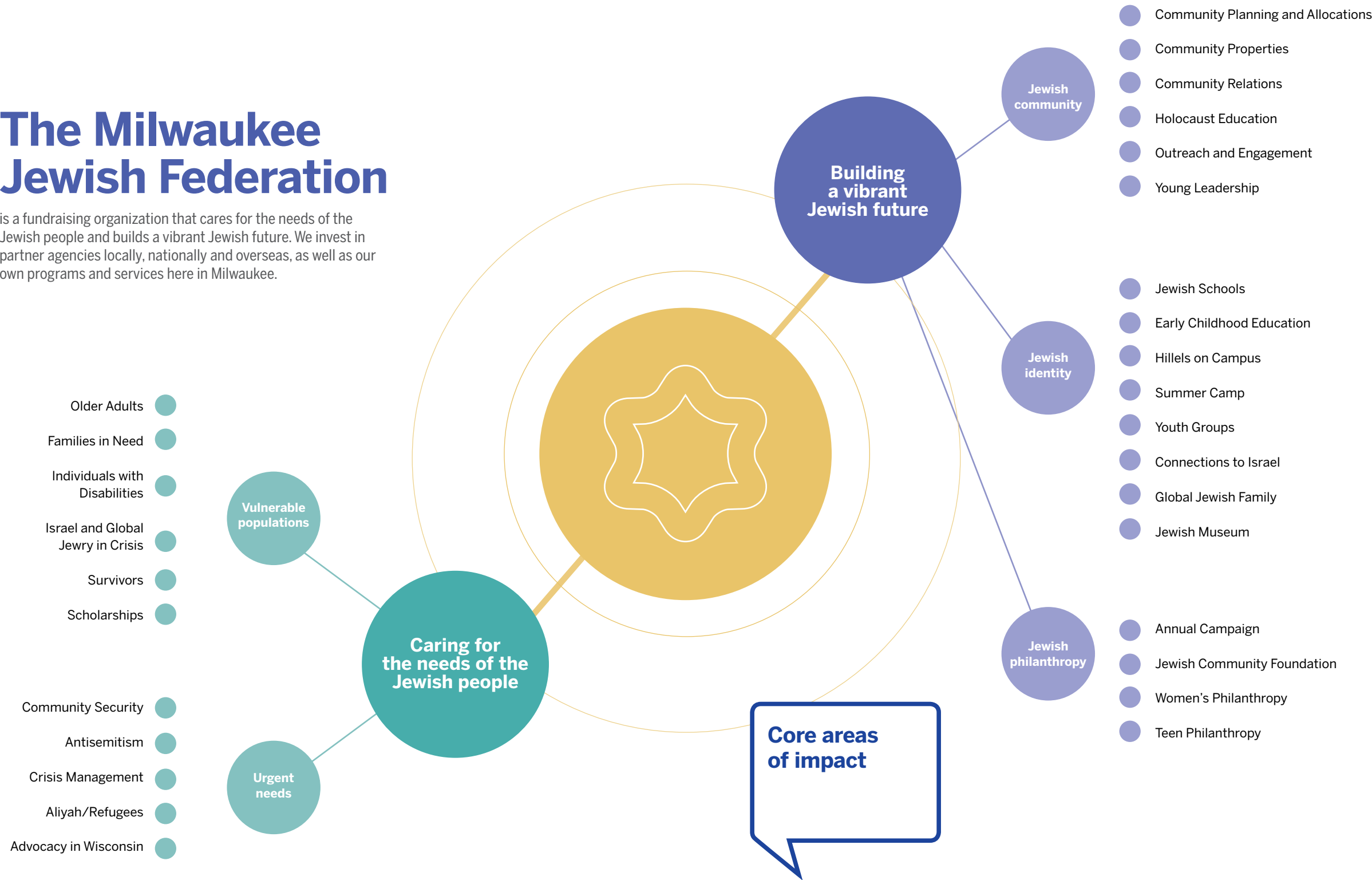
American Jewish Joint Distribution Committee  
Jewish Agency for Israel  
Taglit-Birthright Israel  
World ORT

## Community properties

Evan and Marion Helfaer  
Community Service Building  
Golda Meir Apartments  
Habush House  
Hillel Milwaukee Student Center/  
Joseph and Vera Zilber Building  
Maurice S. Surlow Senior Residences  
Max and Anita Karl Jewish Community  
Campus  
Shlichut Residence

# The Milwaukee Jewish Federation

is a fundraising organization that cares for the needs of the Jewish people and builds a vibrant Jewish future. We invest in partner agencies locally, nationally and overseas, as well as our own programs and services here in Milwaukee.





# Caring for the needs of the Jewish people

**40,000**

individuals fed by pantries, mobile meals and food drives

**7,300**

mental health counseling sessions

**300**

residents in affordable housing

**4**

residences with social services for low-income seniors and individuals with special needs

**462**

elders received Family Care services allowing them to remain in their homes

**439**

seniors participated in socialization programs

**202**

participated in brain health programs

## Vulnerable Populations

### Social Services

While many of the Jewish community's needs evolve, the need for social services persists among Jews and Milwaukee area residents in general. Guided by our Jewish values and through the work of our partner agencies\*, the Federation supports individuals and families of every age, race, religion or income who are in need of services.

### Aging Adults

Our Jewish community has the honor and the obligation to care for our aging adults. The Federation invests in this care through our partner agencies\*, empowering our parents and grandparents to maintain their independence and to live in comfort and dignity.

\*Our primary partners are the Harry & Rose Samson Family Jewish Community Center, Jewish Family Services, and Ovation Communities locally, and the American Jewish Joint Distribution Committee (JDC) and Jewish Agency for Israel (JAFI) in Israel and overseas.







## Global Jewry

The Federation serves the needs of our global Jewish family through partners\* on the ground in every corner of the globe. Together we help ensure that Jews in the former Soviet Union need not choose between essentials like food and medicine, Ethiopian immigrants need not go without assistance, and Israelis living in poverty need not suffer from hunger. Most important, our brothers and sisters around the world know they are never alone.

\*Our primary partners are the American Jewish Joint Distribution Committee (JDC), the Jewish Agency for Israel (JAFI), World ORT, and the Hebrew Immigrant Aid Society (HIAS).

## Security

As attacks on houses of worship have increased, security is now one of the most critical needs facing our Jewish community. The Federation has grown our security program over the past decade and continues to expand. This year we brought a unique training opportunity to Milwaukee — the first of its kind in the United States. Experts from Magen David Adom, Israel's emergency response service, taught members of multiple faith groups how to remain safe amid the chaos of a violent incident.

## Urgent Needs

**\$600,000** in grants secured with Federation assistance from the Federal Emergency Management Agency (FEMA), the Department of Homeland Security, and the State of Wisconsin

**174** individuals from different faith groups participated in Magen David Adom crisis response training

**30** synagogues and Jewish agencies were prepared for a crisis through security assessments and training

# 10,000

lunches served to at-risk students at Branco Weiss High School in Sovev Kinneret, our partner region in Israel

# 148

Ethiopian students (grades 8-12) in Afula, Israel, received Ethiopian National Project Scholastic Achievement assistance

# 100,000

in the former Soviet Union received lifesaving food, medicine, home care and heat

# 3,300

refugees received essential support — from food and clothing to medical and employment services — after arriving in the United States

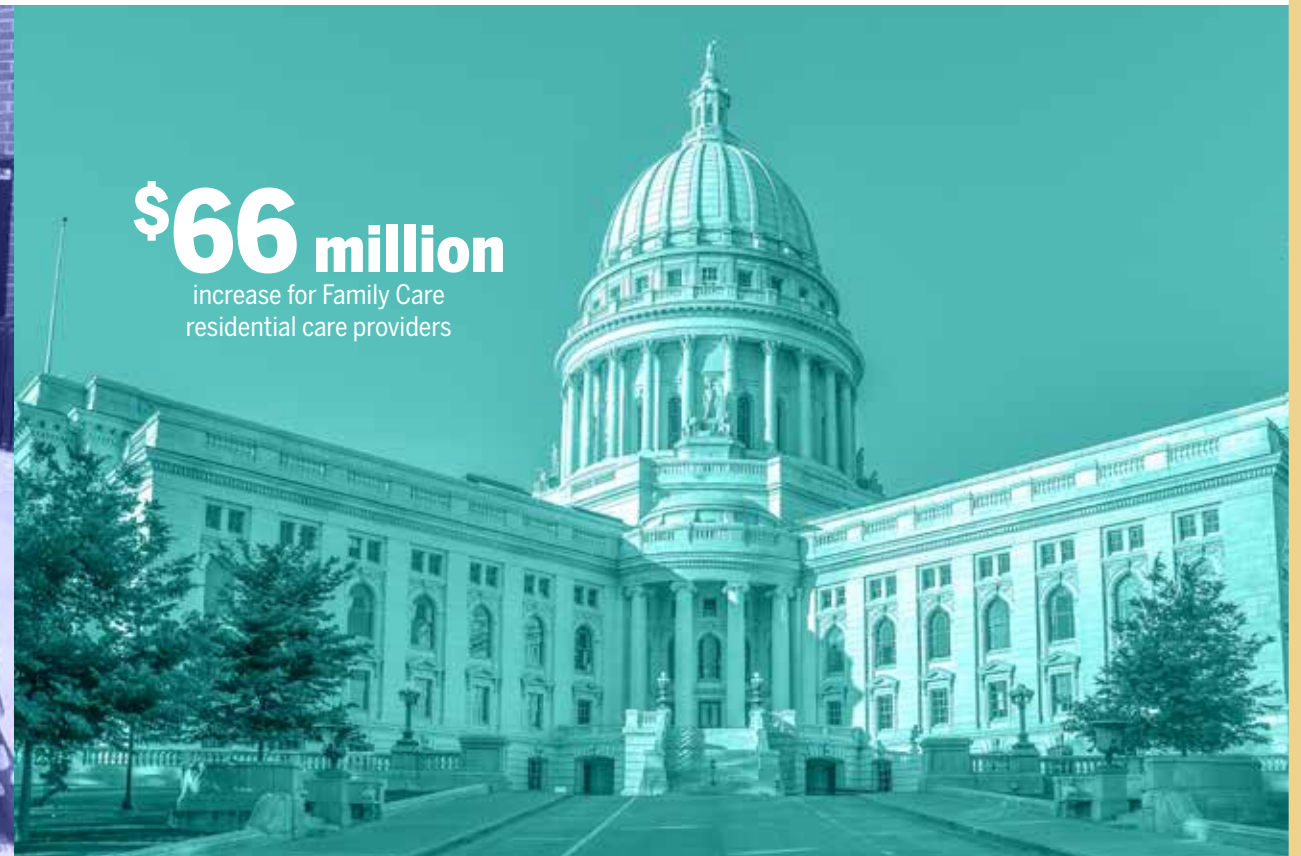




## Urgent Needs



On May 6, 2019, JCRC staff respond to an incident on campus at UW-Milwaukee.



**\$66 million**  
increase for Family Care  
residential care providers

### Antisemitism

Wisconsin experienced another double-digit increase — up 21% — in acts of antisemitism, according to an audit by the Federation's Jewish Community Relations Council. No longer an extreme phenomenon, antisemitism has become more commonplace and mainstream. Through strategic relationship building, education and outreach, the JCRC builds bridges across faith, civic and ethnic groups so we don't face these challenges alone. We also hold communities and institutions accountable when acts of antisemitism occur.

**28,000** Wisconsinites learned lessons of the Holocaust from the Nathan and Esther Pelz Holocaust Education Resource Center

**4,227** individuals attended bridge-building social justice events

**47** incidents of antisemitism addressed by the JCRC

**\$3 million** increase for transit services for older adults and people with disabilities

**12%** increase in reimbursements for in-home caregivers for older adults and people with disabilities

### Advocacy

The State of Wisconsin's budget funds many of the programs people in our Jewish community depend on like public transportation and social services. Through a coalition of advocates in Madison, we helped secure more dollars from the state budget in the next two years for these important issues. Some of the increases will directly benefit Jewish Family Services, which is a Family Care provider.





**Crisis Response**

The Federation is unique in the Jewish community for our ability to mobilize financial resources and assistance on the ground when a crisis occurs – natural and political, next door and across the world. An immediate response to a crisis is possible because our partners\* are often on location hard at work before a crisis occurs.

\*Our primary partners are the American Jewish Joint Distribution Committee (JDC), the Jewish Agency for Israel (JAFI) and Jewish Federations of North America.

**60 families** affected by wildfires in Israel received aid to cover immediate needs like clothing and personal belongings

**8 nations** received post-disaster support from JDC including Indonesia, Guatemala and India



**313**

hours of professional development instruction for the educators who teach our children

**\$20,000**

in grants distributed to drive innovation in Jewish education

**1,037**

students in Jewish day schools

**Building a vibrant Jewish future**

**Jewish Education**

Jewish preschools, day schools and synagogue-based religious schools not only educate our children about Jewish history and culture, they also create bonds among the students, parents and families that often last a lifetime. Federation-funded schools offer a spectrum of options for meeting each family’s religious and cultural practices while offering a first-rate secular education. Federation also invests in our educators through professional development, one of the best ways to boost the quality of Jewish education.

**\$600,000**

distributed to make Jewish day school more affordable



## Building a vibrant Jewish future

### Jewish Life

In our quest to build a vibrant Jewish future, the Federation supports agencies\* and programs\* that offer a variety of avenues for children, teens, college students and adults to participate in Jewish life. These experiences earlier in life often lay the foundation for connection to Judaism as an adult.

\*Bader Hillel Academy, BBYO-Wisconsin Region, Coalition for Jewish Learning, Harry & Rose Samson Family Jewish Community Center, Hillel Foundation at UW-Madison, Hillel Milwaukee, Israel Center, Jewish Beginnings Lubavitch Preschool, Jewish Museum Milwaukee, Milwaukee Jewish Day School, Nathan and Esther Pelz Holocaust Education Resource Center and Yeshiva Elementary School are our primary partners and programs providing Jewish education.

### Bridge with Israel

Connecting Jews in Milwaukee with the people of Israel is a time-tested path to a vibrant Jewish future. The centerpiece of this work is our Israel cultural emissary program where we bring a Shaliach (adult emissary) and their family, as well as two Shin Shins (young emissaries) and an Israel Campus Fellow to live and work side-by-side with Jews in Milwaukee. Milwaukee has the oldest continuous Shlichut program in North America. The personal connections created through cultural programming, travel and education create deep and often lifechanging relationships.

**192** Shalom Baby participants

**1,506** participants in social and networking events through our Young Leadership

**9,783** visitors to our Jewish Museum Milwaukee

**\$40,000** invested in Israel Campus Fellow at UW-Milwaukee

**209** participants in Birthright

**42** participated in Milwaukee Jewish Federation trips to Israel

**4 emissaries** lived in Milwaukee last year, connecting children, teens, college students and adults with life in Israel

# 387

children and teens in BBYO-Wisconsin Region and BBYO Connect

# 2,000+

campers at Harry & Rose Samson Family Jewish Community Center camps

# 232

Shalom Milwaukee participants

# 4,500+

free Shabbat dinners at Hillel Milwaukee and Hillel UW-Madison

Albert & Ann Deshur JCC Rainbow Day Camp



## Global Jewish Family

While the Federation is hard at work building a vibrant Jewish future in Milwaukee, we're also investing in the future of our global Jewish family.\* We're sending Eastern European children to Jewish summer camp — the first opportunity many of these children have to learn about their Jewish heritage. We're teaching technical skills to the ultra-Orthodox so they can support their families. And we're working to ensure that all Jews can express their Judaism equally.

\*The American Jewish Joint Distribution Committee (JDC), Hebrew Immigrant Aid Society (HIAS), Jewish Agency for Israel (JAFI) and World ORT are our primary partner agencies that enhance our global Jewish family.

**\$18,000** invested in promoting more pluralistic approaches to issues like conversion, marriage, divorce, and prayer

**8,000** kids in summer camps, a gateway to Jewish life, in the former Soviet Union, Middle East and Asia

**3,800** Israelis received technical and engineering education including special programs for targeted populations including Bedouins, single mothers, ultra-Orthodox and immigrants

**390** African olim (immigrants to Israel)



Jewish teens learning about their heritage in the former Soviet Union.

## How we do it



Weinstein Fellows mission to Israel



Women's Philanthropy Chair Sharyl Paley (left) and Women's Campaign Chair Cheryl Moser

## CULTIVATING PHILANTHROPISTS AND LEADERS

The foundation of Jewish community is people — individuals and families who are committed to Jewish life and willing to show their support through volunteering, leadership and philanthropy. Through our Women's Philanthropy, Young Leadership and Teen Philanthropy programs, the Federation is ensuring that these individuals are engaged today and in the future.

Our George Weinstein Fellowship is an intensive program that trains young adults to lead us forward. Weinstein Fellows are coveted volunteers who find their way onto boards and committees throughout the Jewish community.

**416** attended Women's Philanthropy events

**1,506** attended Young Leadership programs

**15\*** participated in our Weinstein Fellowship

**30\*** teens learned how to change the world through philanthropy

\*maximum capacity for each cohort

# The Milwaukee Jewish Federation is the philanthropic headquarters for Milwaukee's Jewish community

Meeting today's financial needs



Lauri Roth, Annual Campaign Chair

The Milwaukee Jewish Federation's Annual Campaign is built each year by thousands of dedicated donors and volunteers. It's these dollars that drive many of the results described throughout this report. These are especially valuable dollars because most are unrestricted, allowing each organization to use the funds where they are needed most.

## ENDOWED GIFTS

More and more donors are endowing their gifts to the Annual Campaign. An endowment ensures that after a donor is gone, an Annual Campaign contribution will be made in their name every year forever.

## JEWISH COMMUNITY FOUNDATION

The Jewish Community Foundation is the arm of the Milwaukee Jewish Federation focused on building a strong financial future through endowments and planned giving. The Foundation works hand-in-hand with individuals, families and Jewish agencies to help fulfill their charitable desires. As the Foundation continues to grow, so will the financial security of our Jewish community.

## FUNDS

**Over 500 Endowment Funds:** An endowment is a fund that may support a charitable organization or cause in perpetuity. The JCF holds endowment funds for 35 agencies, schools and synagogues.

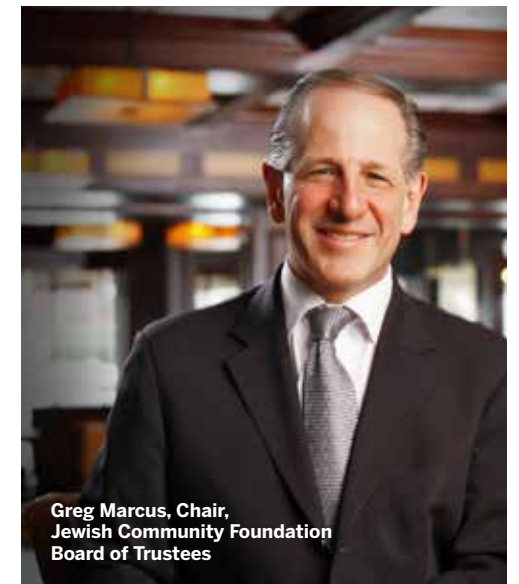
**Over 400 Donor Advised Funds:** Donor advised funds enable donors to recommend grants based on their personal interests and charitable objectives.

**Over 16 Charitable Gift Annuities and Charitable Trusts:** These planned giving vehicles allow donors to receive income during their lifetimes and make an after lifetime gift to the Federation or an endowment fund.

**Over 600 Create a Jewish Legacy Donors:** Create a Jewish Legacy is a program that encourages individuals and families to create legacy gifts providing permanent support to the organizations they care about.

**Over 130 Book of Life Signers:** The Book of Life is a collection of individual histories, hopes and dreams of people from all walks of life who have made commitments, either during their lifetimes or through their wills, to establish an endowment or make a bequest to the Jewish community of Milwaukee.

Meeting tomorrow's financial needs

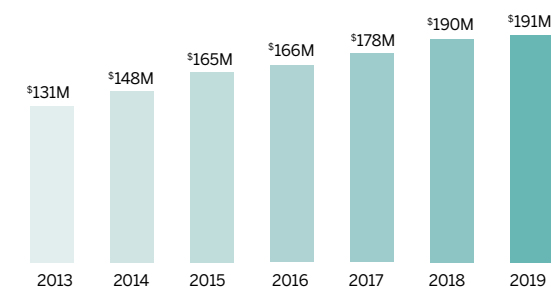
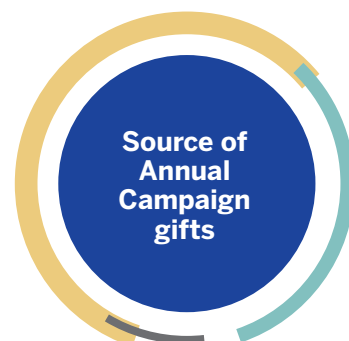


Greg Marcus, Chair, Jewish Community Foundation Board of Trustees

**\$6.45 million** total 2019 Annual Campaign achievement

**\$1.67 million** raised by Women's Philanthropy

**\$932,000** distributed from endowed Annual Campaign gifts



Jewish Community Foundation Total Assets

**\$13,188,031** contributed to the Foundation

**\$12,762,911** distributed in 4,539 grants to 1,105 charities



## Community Convening

The Federation, as a centralized coordinating body, can build community in ways that no other local Jewish organization can. We mobilize people in good times — like celebrations of Israel with the Harry & Rose Samson Family Jewish Community Center — and bad times — such as the killings at the Tree of Life Synagogue in Pittsburgh. We're also able to tackle big issues that don't belong to any single Jewish organization.

The Federation can serve as an incubator for new community-wide initiatives. This year Women's Philanthropy and our Coalition for Jewish Learning launched SHOFAR (Safeguarding Healthy Families and Relationships) to prevent abuse and support victims with sensitivity to the unique cultural needs of the Jewish community. We chipped away at hate through our Lunch Hours Against Hate program in schools and through Partnership MKE, a collaboration between the Federation and United Way of Greater Milwaukee and Waukesha.

**103,200** issues of the Wisconsin Jewish Chronicle distributed across the state

**1,800** individuals attended a community gathering following the Tree of Life killings

**1,500** participated in observances of Yom HaShoah (Holocaust Remembrance Day), Yom HaZikaron (Israel's Day of Remembrance) and Yom HaAtzmaut (Israel's Independence Day)

**800** individuals attended the kick-off of SHOFAR

**300** Jewish communal professionals trained on preventing, recognizing and acting on physical, domestic and sexual abuse

**167** educators from 13 Jewish schools and synagogues participated in professional development training by our Coalition for Jewish Learning

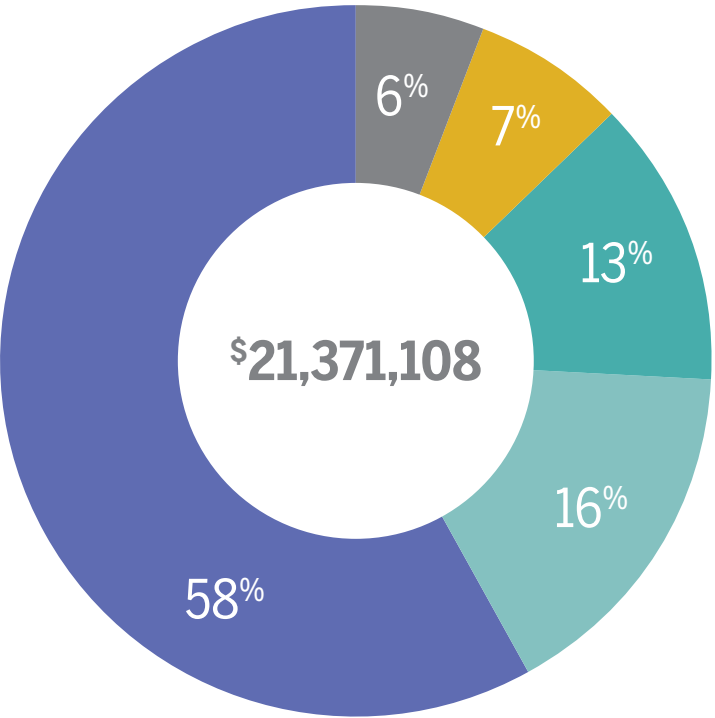
## Community Planning

One of the reasons donors give to the Federation is that we are always looking at the overall picture of Jewish life.

**WE ASK THE BIG QUESTIONS:** What does our Jewish community need to thrive today? What will the needs be in the future? How can we, collectively, address these needs today and tomorrow? And what's the wisest way to invest the charitable dollars that have been entrusted to us?

This year we formed a Human Services Task Force to explore how we should fund services that address critical issues affecting the day-to-day functioning of individuals and families including poverty, hunger, disability, aging and mental health. Next year we will report on our increased investment of \$78,000.

Through our Annual Campaign and our Jewish Community Foundation, the Milwaukee Jewish Federation develops and distributes financial resources to support our community. The Federation also manages properties for the benefit of our community, providing subsidized occupancy to our local partner agencies.



Support  
for our  
community

Support by Impact Area\*

- Human Services
- Culture
- Education
- Religion
- Other

Jewish and Secular Recipient Organizations\*



Local and National/Overseas Recipient Organizations\*



\*Includes funds from our Annual Campaign and our Jewish Community Foundation

2018-19 SUMMARY OF SUPPORT FOR OUR COMMUNITY

	Annual Campaign Allocation	Jewish Community Foundation Grants <sup>(a) (b)</sup>	Total
<strong>Local Partner Agencies</strong>			
Bader Hillel Academy	\$ 215,387	\$ 258,853	\$ 474,240
BBYO – Wisconsin Region	67,812	62,229	130,041
Harry and Rose Samson			
Jewish Community Center	968,516	1,131,576	2,100,092
Hillel Foundation –			
University of Wisconsin (Madison)	56,184	76,188	132,372
Hillel Milwaukee	106,398	113,824	220,222
Interfaith Conference of Greater Milwaukee	10,400	5,733	16,133
Jewish Beginnings Lubavitch Preschool	92,077	38,334	130,411
Jewish Family Services	549,491	662,186	1,211,677
Milwaukee Jewish Day School	493,744	797,719	1,291,463
Ovation Communities	40,494	421,167	461,661
Yeshiva Elementary School	104,221	83,135	187,356
Local Partner Agencies	2,704,724	3,650,944	6,355,668
<strong>Other Local Agencies</strong>			
Local Jewish Agencies	-	3,592,710	3,592,710
Local Secular Agencies	-	2,857,435	2,857,435
Other Local Agencies	-	6,450,145	6,450,145
<strong>National and Overseas Agencies</strong>			
Jewish Federations of North America	238,296	10,519	248,815
National Secular Agencies	-	1,221,354	1,221,354
Other National Jewish Agencies	21,807	1,351,221	1,373,028
Overseas Agencies	1,097,717	78,728	1,176,445
National and Overseas Agencies	1,357,820	2,661,822	4,019,642
<strong>Milwaukee Jewish Federation</strong>			
Operations	1,469,931	-	1,469,931
Coalition for Jewish Learning	216,326	-	216,326
Jewish Museum Milwaukee	79,478	-	79,478
Israel Center	521,721	-	521,721
Nathan and Esther Pelz		-	
Holocaust Education Resource Center	26,953	-	26,953
Wisconsin Jewish Chronicle	-	-	-
Milwaukee Jewish Federation	2,314,409	-	2,314,409
Subtotal	6,376,953	12,762,911	19,139,864
Other Support: Local Partner Agencies <sup>(c)</sup>			1,779,446
Other Support: Milwaukee Jewish Federation <sup>(c)</sup>			451,798
<strong>Total</strong>			<strong>\$ 21,371,108</strong>

<sup>(a)</sup>Donors in the Jewish Community Foundation distributed \$2.2M to satisfy Annual Campaign commitments and to assist with Federation operating costs and direct services (see list on page 2). In total, \$15.0M of charitable distributions were made from JCF fund during 2018-19. <sup>(b)</sup>Many Jewish community agencies house their endowments at JCF, and draws on endowments are included here. <sup>(c)</sup>Other support includes the costs associated with managing community properties including debt service, maintenance, IT consulting, bill payment and similar services, as well as the value of time spent by our marketing department.



2018-19  
Leadership

Board Chair

Moshe Katz

President & CEO

Miryam Rosenzweig

Secretary

Nancy Kennedy Barnett

Treasurer

Esther Ancel

Vice Chairs

2019 Annual Campaign

Lauri Roth

Community Planning & Allocations

Barbara Glazer & Sara Hermanoff

Governance & Nominating

Lisa Hiller

Israel & Overseas

Pnina Goldfarb

Jewish Community Foundation

Greg Marcus

Jewish Community Relations Council

Ann Jacobs

Women's Philanthropy

Sharyl Paley

2018-19  
Board of Directors

Esther Ancel

Susan Angel Miller

Brent Arnold

Nancy Kennedy Barnett

Allan Carneol

David Cohn

Judith Coran

Barbara Glazer

Pnina Goldfarb

Eileen Graves

Sara Hermanoff

Lisa Hiller

Ann Jacobs

Kurt Janavitz

Moshe Katz

Joan Lubar

Greg Marcus

Dana Margolis

Todd Miller\*

Cheryl Moser

Mitchell Moser

Sharyl Paley

Frances Richman

Michael Rosenberg

Lauri Roth

Yoni Schlusell

Andrea Schneider

Susan Lubar Solvang

Carrie Steinberger

David Werner

Board Members Emeritus

Bruce Arbit

Daniel Bader

Mark Brickman

Steve Chernof

Betsy Green

Judy Guten

Marlene Lauwasser

David Lubar

Steven Richman

Allen Samson

\*Of blessed memory

2018-19  
Committees

Annual Campaign

Raises funds annually to support Jews in 70 countries around the world

Lauri Roth, Annual Campaign Chair

Cheryl Moser, Women's Campaign Chair

Coalition for Jewish Learning

Coordinates community-wide education initiatives

Leon Cohen, Chair

Penny Wynn, Day School Grant Allocation

Community Planning & Allocations

Identifies community needs, recommends

Annual Campaign allocations

Barbara Glazer & Sara Hermanoff,

Community Planning & Allocations Chairs

Louise Jesse & Betsy Rosenblum,

Agency Review Council Chairs

Finance Committee

Manages investments & provides financial oversight

Esther Ancel, Chair

Laurance Newman, Investments

David Werner, Fiscal Stewards

Ryan O'Desky, Audit

Israel & Overseas

Connects Jews in Milwaukee, Israel and Overseas

Pnina Goldfarb, Chair

Brent Arnold, Kesselman Scholarship

Jennifer Saber, Partnership2Gether

Joan Kazan & Bobbi Rector, Yom HaZikaron

Robyn Eiseman, Rachael Marks & Mitch Nelles,

Yom HaAtzmaut

Jewish Community Foundation

Advises and oversees Foundation policies, fund development, investments and distributions

Greg Marcus, Chair

Allan Carneol, Scholarships

Greg Marcus, Endowments

Laurance Newman, Investments

Jewish Community Relations Council

Represents the Jewish community in public affairs and countering antisemitism

Ann Jacobs, Chair

Laura Emir, Social Justice/Domestic Policy

Jill Plavnick, Antisemitism/Constitutional Law

Jewish Museum Milwaukee

Preserves and presents Jewish history and culture

Anneliese Dickman, Chair

Executive Committee: Stephen Becker, Lori Craig,

Penny Deshur, Noah Domnitz, Suzy Ettinger,

Neena Florsheim, Marjorie Margolies

Nathan and Esther Pelz Holocaust Education Resource Center

Teaches the lessons of the Holocaust

Arleen Peltz, Chair

Ronna Bromberg Pachefsky and Becky Komisar,

Community Programs

Betty Chrustowski and Bruce Peckerman,

Development

Jodi Habush Sinykin and Monica Olague-Marchan,

Education

Women's Philanthropy

Educating and engaging women in philanthropy

Sharyl Paley, President

Cheryl Moser, Women's Campaign Chair

## 2018-19 Staff

### Executive

Miryam Rosenzweig, President & CEO  
Cynthia Jansen, Executive Assistant

### Business Services

Tom Lindow (Currently Tom Oechler), CFO/COO  
Pat Cornett, Accounting Director  
Amanda Edwardson, Receptionist  
Cole Griffin, Financial Analyst  
Mason Nowak, Accounting Assistant/IT Coordinator  
Cindy Schaefer, Senior Accountant

### Security and Properties

Ari Friedman, Director of Security and Community Properties  
Donald Vertcnik, Maintenance Manager  
Maintenance Staff: David Atias, Joel Easterling, Mike Olson, Tommy Rice

### Financial Resource Development

Caren Goldberg, MJF Chief Development Officer & Jewish Community Foundation Executive Director  
Emily Barker, Administrative Assistant  
Lauren Berger, Young Leadership Director  
Amy Blumenthal (Currently Dana Margolis), Director of Women's Philanthropy  
Leslie Burden, Senior Development Administrative Assistant  
Anna Goldstein, Outreach & Teen Philanthropy Coordinator  
Dustin Klein, Senior Development Associate  
Jordan Primakow, Director of Philanthropic Services  
Shelly M. Sampon, Campaign Director  
Sowa Unora, Executive Assistant  
Jen Vettrus, Senior Endowment Associate



### Marketing & Community Planning

Stephanie Wagner, Chief Marketing & Planning Officer  
Tela Bissett, Executive Assistant/Chronicle  
Subscription Coordinator

### Marketing

Jeff Jones, Marketing & Communications Director  
Barbara Budish, Senior Graphic Designer  
Ashleigh Lund, Events Manager  
Melissa Taylor, Digital Media Specialist

### Wisconsin Jewish Chronicle

Rob Golub, Editor  
Amy Butterfield\*, Graphic Designer  
Jane Dillon, Sales Representative

### Outreach

Rabbi Hannah Wallick, VP Outreach, Israel & Overseas  
Allison Hayden – Israel, Education, and Jewish Community Relations Council Program Specialist

### Israel Center

Shaked Ram, Israel Campus Fellow  
Susie Rosengarten\*, P2G Coordinator  
May Ben Shabbat, Shin Shin  
Yogev Toby, Shin Shin  
Keren Weisschhaus, Shlichah

### Jewish Community Relations Council

Elana Kahn, Director  
Andrea Bernstein\*, Hours Against Hate Coordinator

### Coalition for Jewish Learning

Tziporah Altman-Shafer, Director

### Jewish Museum Milwaukee

Patti Sherman-Cisler, Executive Director  
Molly Dubin, Curator  
Ellie Gettinger, Education Director  
Jay Hyland, Archives Director  
Cassie Sacotte, Special Events & Programs Coordinator

### Nathan and Esther Pelz

#### Holocaust Education Resource Center

Dr. Shay Pilnik, Executive Director  
Kari Altman, Outreach & Public Relations Coordinator  
Brittany Hager McNeely, Director of Education  
Dr. Dan Haumschild\*, Holocaust Education Fellow  
Judy O'Hara\*, Administrative Coordinator  
Sara Sillars\*, Educator

\*Part time

## THANK YOU!

# We offer our deepest gratitude to the generous donors who have supported Jewish Milwaukee through gifts to the 2019 Annual Campaign and Legacy Gifts.



**2019  
Annual Campaign  
MILWAUKEE  
JEWISH FEDERATION**

**MOSHE KATZ**  
Board Chair

**GREG MARCUS**  
Chair, Jewish Community Foundation

**LAURI ROTH**  
Campaign Chair

**CHERYL MOSER**  
Women's Campaign Chair

**MIRYAM ROSENZWEIG**  
President & CEO

**CAREN GOLDBERG**  
Chief Development Officer

Ron and Ann Abele  
Jane and Andi Abraham  
Ben and Molly Abrohams  
Rabbi Steven and Gail Adams  
Lynn and Betty Adelman  
Karrie and Jeff Adix  
Marlene Adland  
Jill and John Adler Donor Restricted Fund  
Aaron Aizenberg  
Katherine Albano  
Henry and Sandra Albert  
Debbie and Dick Alpert  
Tom and Kathy Alpren  
Rabbi Joel Alter  
Al and Joyce Altman  
Barbara and Scott Altman  
Joel and Tzipi Altman-Shafer  
Stanley and Helene Altshull  
Brian Stark and Deb Altshul-Stark  
Dr. David and Terry Amrani  
Fredric and Esther Ancel, PhDs  
ANON Charitable Trust  
Jim and Joni Ansfield  
Miriam Ansfield  
Bill and Elaine Appel  
Larry and Sheila Appel  
Mendel and Elisheva Appel  
Tim Loduha and Nancy Appel  
Steve and Joy Appel  
Shirah Apple  
Bruce and Tanya Arbit  
Naomi Arbit  
Scott Arbit  
Karen Henkin Arbit  
Donald Arenson  
Mauricio and Sheila Arenzon  
Steven and Robin Arenzon  
Phillip and Yaffa Arieff

Paul Matzner and Julie Armour  
Harriet Arnol  
Brent and Kelly Arnold  
Randy and Janet Arnold  
Ronald and Wendy Arnold  
Art Arnstein  
David and Monica Arnstein  
Jerome and Deborah Aronson Fund  
Sarit Aschkenazi  
Michael and Tracy Askotzky  
Phil Askotzky  
Aaron Arbiture and Hagit Aslack  
Ben and Grace Asman Memorial Fund  
Phil Musickant and Stephanie Astrin  
Debbie and Mark Attanasio  
Drs. Jane and Ellis Avner  
Sami Stein Avner  
Dr. Bruce and Dr. Elizabeth Axelrod  
Stan and Kristina Azimov  
Allen and Michelle Babbitz  
Eli and Aimee Bachar  
Romaine Backer  
Alfred\* and Isabel Bader  
Daniel and Linda Bader Foundation  
Marty and Rachael Badt  
Roman and Anna Bakalinsky  
Dr. Alan and Evelyn Balkansky  
Mike and Rosalee Bamberger  
Bonnie Jean Barczak  
David and Missie Barnett  
Jim and Nancy Barnett  
Michael and Rabbi Jessica Barolsky  
Dr. Rea Katz and Richard Bartlein  
David and Helen Baruch  
Steven and Judy Baruch  
Donald and Caren Bass  
Gene and Marilee Bass  
Michael and Tovah Bates

Orrick Nahmmacher and Rachel Baum  
Rhoda Baumgarten  
Donna Baumgartner  
Danya Strait & Robert Bawden  
Adam and Amy Bazelon  
David Moss and Colleen Beaman  
Drs. Brian and Laurel Bear  
Jack and Ruth Beck  
David and Dana Becker  
Gerald and Ann Becker  
Dr. Irving and Muriel\* Becker  
Marge Becker  
Neil and Amy Becker  
Donna and Peter Becker  
Stephen and Barbara Becker  
Albert and Ruth Beder  
Doris Bein-Arenzon  
Katie Mangan and Mitchell Bender  
Jerry\* and Cindy Benjamin  
Richard and Anita Bensman  
Yael Gal and Ophir Ben-Yitschak  
Tania Beraun  
Ed and Judy Bercovici  
Adam and Amanda Berg  
Donna and Robert\* Berg  
Rabbi Noah Chertkoff and Lauren Berger  
Rizal Iskandarsjach and Risa Berg  
-Iskandarsjach  
Akiva Bergman  
Aaron and Aviva Bergtrom  
Gerald and Sydel Bergtrom  
Elaine and Ken Berke  
Heather Berken  
Bebe Berkoff  
Jonathan and Elissa Berkoff  
Abraham H. Berkovits Memorial Fund  
Rabbi Marc Berkson  
Mark Mendelsohn and Audrie Berman



## OUR DONORS

Elliot and Cantor Karen Berman  
 Gene Berman  
 Jay and Michele Berman  
 Tom and Mindy Berman  
 Alan and Barbara Bern  
 Aaron and Debbie Bernstein  
 Avi and Andrea Bernstein  
 Belle Bernstein  
 Joe\* and Audrey Bernstein  
 Kathie Bernstein  
 Nathan and Shannon Bernstein  
 Paul and Susan Bernstein  
 Judith Biebel  
 Vadim and Fania Bilenkis  
 Joel and Gerry Biller  
 Bert and Marlene Bilsky  
 Earl and Betty Bilsky  
 Jeffrey and Laurie Biskowitz  
 Jay and Ellen Blankenship  
 Mort Blatt  
 Jeffrey Bleustein  
 Eric and Judy Bloch  
 Jerry and Brynn Bloch  
 Robert and Roberta Bloch  
 Stan and Judy Bluestone  
 Edward Blumberg  
 Sherry Blumberg  
 Barb Blumenfield, Ph.D.  
 Ed and Amy Blumenthal  
 Warren and Wendy Blumenthal  
 Liz Blutstein  
 Mark Blutstein  
 Mort Blutstein  
 Harvey and Maris Bock  
 Dr. Burton E. Goodman and  
 Harriet Bocksensbaum  
 Bill and Barbara Bodner  
 Kevin and Diane Boland  
 Wayne and Ilissa Boland  
 Chuck and Lynne Bomzer  
 Ed and Carol Bookstaff  
 Henry and Leanne Borkovitz  
 Anne Borkowf  
 Steven Forst and Susan Bornstein-Forst  
 Adele Borouchoff  
 Jeremy and Julie Borouchoff  
 Alan and Robi Borsuk  
 Rabbi and Mrs. Aryeh Borsuk  
 Jeff Stern and Terri Boxer  
 Gail Boym  
 Gerrie Boym  
 Rabbi Dovid Brafman  
 Herbert Bratt  
 Ruth Mallin Braun  
 Steve and Susan Bressler  
 Mark Brick  
 Rabbi Jay Brickman  
 Mark and Cheryl Brickman  
 Glenna and Brad Brin  
 Rabbi Elly and Leah Broch  
 Benny Brojde and Jessica Brojde  
 Jim and Jean Bromley  
 Rabbi Levi and Fraidy Brook  
 Leslie Brooks  
 Alan and Phyllis Brostoff  
 David Brostrom  
 Bob and Bonnie Bruch  
 Rabbi David and Sandy Brusin  
 Barry and Felice Bruskine

Martin and Ruth Bryskier  
 Betsy Rosenblum and Richard Buchband  
 Bucks Foundation  
 Barbara Budish  
 Dave Sherman and Gina Buono  
 Miryam Rosenzweig and Matthew Burchi  
 Leslie and Ryan Burden  
 George and Ida Bursak Memorial Fund  
 Paul and Sharon Burstein  
 Glenn and Deb Bushee  
 Dennis Cahn  
 Marc and Cherie Caine  
 Richard and Sharon Canter  
 Jim and Bobbi Caraway  
 Allan and Sue Carneol  
 Roslynn Carroll  
 Andrew Catanzaro  
 Joseph Censor  
 Central Baptist Theological Seminary-  
 Wisconsin Site  
 Rebecca Chagall  
 Dr. Lewis and Patricia Chamoy  
 Lauren and Margaret Charous  
 Jack Chernin  
 Jane and Steve Chernof  
 Jeremy Cherny  
 Fred and Jane Chester  
 Ralph and Debbie Chicorel  
 Noah Christensen and The Shorewood Press  
 Betty Chrustowski  
 Daniel and Brigitte Chudnow  
 John A. Yopps and Dr. Melissa Chudnow  
 Joseph and Marian Chudnow Memorial  
 Endowment Adam and Jennifer Ciralsky  
 Bob and Nan Ciralsky  
 Lloyd DeWitt and Jacqueline Clinton  
 David and Diane Cocos  
 Adrian and Carla Cohen  
 Bernie and Robin Cohen  
 Billie L. Cohen  
 Steve Meyerson and Bonnie Cohen  
 Esther Cohen  
 Flora and Arthur Cohen Revocable Trust  
 Leon Cohen  
 Linda A. Cohen  
 Marc and Wendy Cohen  
 Mona Cohen  
 Nolan Cohen  
 David Cohn  
 B.J. and Elyse Cohn  
 Fred and Robin Cohn  
 Irving Cohn  
 Lucile and Norman Cohn Memorial Fund  
 Trish Cohn  
 Stephen Colburn and Marlee Sabo Colburn  
 Bev Colton  
 Baruch and Ronit Comrov  
 Rick and Lynn Conn  
 Aidee and Sam Cooper Foundation  
 Cindy Cooper  
 Andy Komisar and Shannon Corallo  
 Drs. Judith and David Coran  
 Ron and Karen Corlyn  
 Jerry and Rachel Cornfield  
 Bob and Penny Corris  
 Dr. Dale Rottman and Colleen Crane  
 Eric and Elsie Crawford  
 Betty Croen  
 Fred and Amy Croen

Eugene Crossot  
 Glenn and Susan Cummins  
 Barry Cymerman  
 Dianne Dagelen  
 Brad and Becky Dallet  
 Alan and Hedy Daniel  
 Michael and Jeri Danz  
 Mark Daskal  
 Paul Davidson  
 Beverly Davis  
 Miriam Davis  
 John Traxler and Anne Dayer  
 Richard De Smet  
 Paul Debler Memorial Fund  
 Sam and Marsha Denny  
 Rose Derzon Memorial Donor Advised Fund  
 Albert & Ann Deshur Memorial Foundation  
 Bill Deshur  
 Jim and Penny Deshur  
 Sandi Deshur  
 David and Linda Deskalo  
 Brian Borkin and Renee Destrampe  
 Alan and Sharon Deutch  
 Jerry and Marlene Deutsch  
 Eric Weiner and Margery Deutsch  
 Gregory I. Devorkin  
 DG Marketing Mailing Specialists  
 Annaliese and Max Dickman  
 Sam and Peggy Dickman  
 Barbara E. Dietrich  
 Linda Dingman  
 Bobbi Dinkin  
 Jack Dobrovolny  
 Mitchell Spector and Arlene Dombeck  
 Ari and Angela Domnitz  
 Merrick and Anita Domnitz  
 Noah and Becca Domnitz  
 Harriet and Jerry Dorf  
 Phyllis Dorf  
 Nancy Dowling  
 Michael Doyle  
 Jacques du Plessis  
 Merle Dubin  
 Molly Dubin  
 RoseMarie Dubman  
 Marc Dulberger  
 Yvonne and J. Marshall Dunkleman  
 Rory and Lisa Dunn  
 Dale Dupont  
 Michael and Stephanie Dykeman  
 Thomas Ebert  
 Joel and Chana Eckhardt  
 Fred and Ellen Eckman  
 Rabbi Cheski and Chava Edelman  
 Richard and Nina Edelman  
 Marv and Judy Edelstein  
 Susan Edelstein  
 Audrienne Eder  
 Laura Eder  
 Sue Efron  
 Hy and Sheila Eglash  
 Norb and Judy Eglash  
 Rod and Helen Eglash  
 Steven Eigen  
 Julian Einfrank  
 Eve Eiseman  
 Marge Eiseman  
 Marc and Robyn Eiseman  
 Russ and Merzy Eisenberg

Janet Eisendrath  
 Neal and Mary Eisendrath  
 Reuben and Naomi Eisenstein  
 Gene Eisman  
 Chad and Rachel Eixenberger  
 Benjamin Elias  
 Eric Elias  
 Jennie Lee Elias  
 William and Karen Elliott  
 Dean and Wendy Ellis  
 Joe and Michele Elner  
 Asher Elovic  
 Mustafa and Laura Emir  
 Abby Endejan  
 Gary and Linda Engle  
 Tobias and Miriam Enright  
 Anna and Vladimir Epstein  
 Ely Epstein Memorial Endowment  
 Harry Epstein Memorial Endowment  
 Beulah Erensky  
 Larry and Michelle Erlich  
 Diana Kahn and Michael Ertis  
 Jeff Esser  
 Gary Greenberg and Susan Esser-Greenberg  
 Nancy Ettenheim  
 Ettinger Family Foundation  
 Suzy Ettinger  
 Claire and Ken Fabric  
 Sigal Fadumiye  
 David and Catherine Fantle  
 Sanford and Roberta Fedderly  
 Dr. Lewis and Beverly Feiges  
 Randi Feiler  
 Sandra Feiler  
 Ben and Ella Feinberg  
 Brad Backer and Dena Feingold  
 Don Feinsilver  
 Rose Ann Wasserman and Daniel Feinstein  
 Florence Steinberger and Andy Feiring\*  
 Ferd and Sarah Feiss  
 Estelle Felber  
 Howard and Beth Felix  
 Otto and Agnes Feller  
 Deb and Ben Fendrich  
 Lee and Marsha Fensin  
 Avi Fenster  
 Stanley Ferstadt  
 Leah Fiasca  
 Dr. Jacob and Etta Fine Memorial Fund  
 Jerry and Paula Fine  
 Roberta and Dr. Stuart\* Fine  
 Ted and Janet Fine  
 Barry and Marilyn Finegold  
 Bill and Marti Fink  
 Dr. Jordan and Phyllis Fink  
 Adam Finkel  
 Susan Fishbach  
 Carol K. Fishman  
 Harry\* and Florence Fishman  
 Joel and Sylvia Fishman  
 Dmitriy Rusovskiy and Yuliya Fishman  
 Matthew and Miriam Fleming  
 Ellen and Dr. James Flesch  
 Chris Flint  
 Andrea Florsheim  
 Rick and Neena Florsheim  
 Diane and Bill Forman  
 Boaz Avitall and Rachel Forman  
 Susan Furray

Doug and Gail Fox  
 Yitzhak and Rochel Fox  
 Jay and Sarah Frank  
 Jeffrey Frank and Family  
 Kristy Frank  
 Dan Frankel  
 Natalie Frankel  
 Stephen and Mary Frankel  
 Howard Frankenthal  
 Fran Franklin  
 Olga Fredenthal  
 Marcia Fredlich  
 Linda and Mark Freedman  
 Yale and Nancy Freiman  
 Yuriy and Inna Frenkel  
 Larry and Gloria Freschl  
 Anna and Marilyn Fridman  
 Susan Frieber  
 John and Bunny Fried  
 Jerry and JoAnne Friedman  
 Judith Friedman  
 Ken and Barbara Friedman  
 Kipp and Anne Friedman  
 Leonor and George Friedman  
 Michael Friedman and Joan Becker Friedman  
 Sidney and Barbara Friedman  
 Werner Froehling Trust  
 Clemmie Fromer  
 James and Ruth Fromstein  
 Pamela Frydman  
 Richard C. Gad  
 Crawford Gaines  
 Irving Gaines  
 Harold Galitzer  
 Chris Gan  
 Judy and Mark Garber  
 Paula Garber  
 Evy Garfinkel  
 Lauren Garlovsky  
 Kate Gehl  
 Zolya and Ludmila Geller  
 Jane Gellman  
 Rosalie Schlitz Gellman  
 Bruce and Lori Gendelman  
 Danni Gendelman  
 Bob and Jill Gershan  
 Cal and Rivka Gershowitz  
 Jane K. Gertler  
 Mitch Nelles and Ellie Gettinger  
 Sharon Ghelman  
 Reuben Bankier and Joan Gigl  
 Robert and Marta Gigl  
 Gene and Inez Gilbert  
 Michael and Jennifer Gilbert  
 Herb Giller  
 Barbara Gilmore  
 Anne and Franklyn Gimbel  
 Josh and Julia Gimbel  
 Joyce Gimbel  
 Sara Gimbel  
 Jeffrey and Terri Gingold  
 Bruce Glaser  
 Mark and Barbara Glazer  
 Gerald and Cissy Glazer  
 Francine Glusman  
 Larry Glusman  
 Alexander and Yanina Goberman  
 Andrea Goetzinger  
 Caren and Daniel Goldberg

Dick and Lois Goldberg  
 Jeffrey M. Goldberg  
 Marlene Goldberg  
 Donald Schoenfeld and Pnina Goldfarb  
 Lee Goldin  
 Alexandra Goldman  
 Rebecca W. Goldman  
 Shirley Goldman  
 Mark and Fran Goldner  
 Bob Goldstein  
 Carol Goldstein  
 Darren and Amy Goldstein  
 Elayne Goldstein  
 Leonard and Diana Goldstein  
 Mark and Stephanie Goldstein  
 Martin and Rozanne Goldstein  
 Paul and Marilyn Goldstein  
 Sharon Goldstein  
 Stephen and Ellen Goldstein  
 Hannah Gollin  
 Deborah and Jim Gollin  
 Bernice Gollup  
 Howard and Jill Gollup  
 Marina Golod  
 Semen and Lyudmila Golod  
 Larry and Geli Golopol  
 Julie Goltermann  
 Robert and Tracy Golub  
 Bret Goodman  
 Idy Goodman  
 Judith and Blane Goodman  
 Kelly and Sheila Goodman  
 Larry and Hannah Goodman  
 Aaron and Karen Goodstein  
 Bob and Harriet Gordon  
 Max Gordon  
 Michael Gordon  
 Bob Rubovits and Julie Gordon-Rubovits  
 Jeff and Lisa Gorelick  
 Nicole Gorelik  
 Seema Gorens  
 Jim Winston and Julie Gorens-Winston  
 Michael and Gillian Gosman  
 Jason and Karen Gottlieb  
 Irving and Reesa Gottschalk  
 Christine Gould  
 David Riemer and Ellen Gran  
 Barbara Grande  
 Josephine Grant  
 Marshall and Rene Gratz  
 Laura and Henny Graupe  
 Glenn and Eileen Graves  
 Betsy and Michael Green  
 Beverly and Martin Greenberg  
 Laura Greene  
 Mary Greenebaum  
 Adam and Katrina Butlein Greenspan  
 Kat Grinker  
 Michael and Sharon Grinker  
 Judy and Morton Grodsky  
 Sidney E. Grossberg, MD  
 Debbie Grossman  
 Marisa Grossman  
 Terry and Dena Grossman  
 Beverly Gruber  
 Jon and Joyce Gudeman  
 Joanne Guendel  
 Dr. Michael and Rebecca Guralnick  
 Judy Guten

## OUR DONORS

Paul and Jessica Guten  
Sharon Guten  
Joel and Ruth Ann Guthmann  
David and Libby Gutterman  
Joyce Gutzke  
Mikhail Litvak and Galina Guzikova  
Bonni Haber  
Gail Haberman  
Mimi and Bob Habush  
Richard Hack  
Dennis and Rachel Hafemann  
Dr. and Mrs. Max Haid  
Chris and Jennifer Halaska  
David and Liz Hallerman  
Samuel Hamilton and Hannah Berman  
Hamilton  
Irv Hansen  
Adriane and David Hansher  
David Feiss and Patricia Hanz  
Toby Harris  
Doris Harrison  
Elizabeth Harrison  
Michael and Shelly Hart  
Bruce Harvey  
Elaine and Donald Harvey  
Jack and Judy Hearst  
Albert Heber  
Marcia Hecker  
Dan and Dana Heffez  
Avraham and Tamar Heifetz  
Barbara Heilbronner  
John Heilbronner  
Kathy and Bill Heilbronner  
Paulette Heller  
Bob and Karen Hellman  
Judith Hellman  
Robert and Ellen Henak  
Jess Henrickson  
Jordan and Kimmy Herbert  
Todd and Jody Herbert  
Mark and Sara Hermanoff  
Barry and Linda Hersh  
Sid and Suzanne Herszenon  
Herb and Ruth Hiller  
Jim and Lisa Hiller  
Barbara Himes  
Adrienne Hirsch  
Marc and Wendy Hirsch  
Aura Hirschman  
Rick Meyer and Gail Hoffman  
Todd Hirschtritt and Noa Holoshitz  
David and Deborah Hoffman  
Dr. Hermes and Thelma Hoffman  
Hugh and Robin Hoffman  
Nathaniel and Sara Hoffman  
Linda Holifield  
Alan and Jodi Holman  
Andrew and Paula Holman  
Dolores Holman  
Michael and Penny Hool  
Florence Holzman  
Bob and Susie Honigberg  
Jodie Honigman  
Joel and Bunny Honigman  
Melissa and Matt Honigman  
Penny and Michael Hool  
Neil Hootkin  
Corinne Horn  
Bob and Sheri Hornik

Al and Shirley Horowitz  
Fred and Ann Horwitz  
Dr. Lawrence A. Howards  
Kenton and Janet Howenstine  
Marsha Hurwitz  
Milton and Sarah Hwang  
Mr. Daniel Hyman  
Paul Hytken  
David and Marisa Iancu  
Bill Tyroler and Barbara Ingram  
Dick Irwin  
Robin and Dina Irwin  
Roberta and Stephen Isaacson  
Phillip Israel  
Brad Brunson and Ann Jacobs  
Ron and Helen\* Jacobs  
Dr. Paul A. Jacobs  
Bonnie and Jack Jacobson  
Jerry and Alice Jacobson  
Marc and Lori Jacobson  
Kurt and Kari Janavitz  
Harry Jankowitz Endowment Fund  
Shlomo and Ahuva Jarcaig  
Cheri Jeffery  
Jennell Jenney  
Jon and Louise Jesse  
Craig and Irina Johnson  
Jeffrey Jones  
Jaye and Mike Joseph  
Leon and Bonnie Joseph  
Paul and Judith Joseph  
Robert and Kami Joseph  
Martin Josephson  
Hal and Jean Kacanek  
Marlene Kagen  
Elana Kahn  
Irv and Barbara Kahn  
Joyce Kahn  
Julie Kahn  
Minnie Kahn  
Sue Freeman and Richard Kahn  
Beverly Kaiman  
Judy Kaiser  
David and Judy Kaiser  
Wesley and Jessica Kalmar  
Dr. Andrew and Carole Kane  
Douglas and Diane Kane  
Dr. Richard and Diane Kane  
Sandy Kaner  
Elsie and Harry Kanin  
Jason and Ruth Kantrowitz  
Daniel Kaplan  
Judy Kaplan  
Kenneth M. and Julianna Kapp  
Aaron and Elana Karan  
Sara and Bennet Karan  
Michael and Tatyana Karmalyuk  
Joe and Debbie Kasle  
Lenny and Sandie Kass  
Gary and Alene Kastel  
Aaron and Meghan Katch  
Edwin Katz  
Hildegard Katz Memorial Fund  
Jean Katz  
Jeff and Karen Katz  
Lawrence and Lisa Katz  
William M. Kravit and Mari S. Katz  
Moshe and Debra Katz  
Natalie Katz

Rusty and Susan Katz  
Josh and Sarah Kirchner  
Cindy and Michael Katzoff  
Bernie and Sylvia Kaufman  
Gary and Reenie Kavalat  
David and Joan Kazan  
Gene and Sheryl Kelber  
Tamar Kelber  
Ted and Mary Kellner  
David Keren  
Daniel Kerns  
Pat and Joan Kerns  
Fannie and William Kesselman Memorial  
Endowment  
Rachel B. Kessler  
Dr. Michael and Mrs. Judi Ketten  
Jack and Audrey Keyes  
Moisey Lerner and Raisa Khaytina  
Victor and Alla Kikhterev  
Nancy and Nate Kittleson  
Russell and Jean Kittleson  
Matt and Mara Kleiman  
Dustin Klein  
Joan E. and Robert Klein  
Natalie Klein  
Randy and Anne Klein  
Tamir Klein  
Donna and Leo Kleiner  
Harvey and Judy Kleiner  
Michael and Terry Kleinman  
Sharon Kliegman  
Stephanie Klurfeld  
Shirley Knight  
Debra and Steven Koenig  
Michael and Bonnie Kofsky  
Herb Kohl Charities  
Edith Kohlenberg  
Mark and Sue Kohlenberg  
Ron and Pamela Kohlenberg  
Scott and Jennifer Kolsky  
Cy and LaVerne Koltin  
Yulia Koltun  
Bill and Becky Komisar  
Claire Komisar  
Jeffrey and Barbara Komisar  
Martin and Gail Komisar  
Eric and Kathy Konik  
Richard and Andrea Konz  
Shirley Kopel  
Allen Koren  
Michael and Tova Koren  
Seymour Koren  
Alanna Koritzinsky  
Steven and Ianne Koritzinsky  
Bruce Semon and Lori Kornblum  
Joel Kosberg  
Inessa Kosovskaya  
Rabbi Dovid Kossowsky  
Joseph and Alla Kotlyarsky  
Maiia Kotylevskaia  
John and Abbe Krahn  
David and Sari Kramer  
Josh Kramer  
Molly Beth Kranitz  
Gloria Krasno  
Sue Krasno  
Charlie Truitt and Megan Kraus  
John and Susan Krauss  
Deborah Kravit

Steve and Anne Kravit  
Pam Kriger  
Bernard and Judy Kristal  
Gerardo and Bonnie Krisztal  
Barbara Kuhn  
Robert and Evelyn Kuhn  
Mary Kuhnmuench  
Ruth Kurensky  
Arlene B. Kurzer  
MJF/Lester, Pearl, Steven and Harvey Kurzon  
Family PACE Fund  
Allen Kwass  
Agie Laev  
Daniel Sapiro and Suzanne LaFleur  
Florence Laguardia  
Matt and Marjorie Laing  
Marsha Lambert  
Alice Lambie  
Ernest W. and Helaine S. Lane Memorial  
Endowment  
Fred Schaumburg and Lynne Langlois  
Valerie Lapins  
Mike and Tracy Lappin  
Muriel G. Lappin  
Susan Larsen  
Jennifer Lask  
Gene and Marcia Laskey  
Art and Nancy Laskin  
Alex Lasry  
Mindon Laue  
Audrey Laufman  
Larry Lauwasser  
Marvin and Marlene Lauwasser  
Allen and Ellen Lavine  
Steven and Debbie Lechter  
Mitchell Lechter and Clara Tarica-Lechter  
Dan and Angela Lee  
Felissa Lee  
Joel and Arlene Lee  
Mordecai Lee  
Jack and Ilene Leff  
Robert and Felice Leib  
Sam and Rosalie Leib  
Eric Leiderman  
Rabbi Yisroel and Mushka Lein  
Rabbi Melech and Judith Lensky  
Phyllis Lensky  
Gil-Ezer Lerer and Deborah Schmidman Lerer  
Goldie Lerer  
Charles and Judith Lerner  
Monroe Lerner  
Linda Leshin  
Lorin Stein\* and Janice Letven  
Jonah and Toni Levenberg  
Linda Gorens-Levey and Michael Levey  
David and Judy Levin  
Judith Levin  
Karina Levin  
Lloyd and Sheri Levin  
Michael and Barbara Levin  
Burt and Frieda Levine  
Joan C. Levine  
Marc and Marta Levine  
Thomas St. John and Micaela Levine  
Michael and Jaime Levine  
Rabbi Nachman and Leah Levine  
Nikki and Jonathan Levine  
Dr. Paul and Judith Levine  
Leonard LeVine Memorial

Lois LeVine  
Kevin Mackey and Susan LeVine  
Helga Levings  
Thomas G. Herz and Bertie Levkowitz-Herz  
Doug and Patti Levy  
Jerry and Ellin Levy  
Judy Levy  
Peter Lee and Karen Levy  
Mark and Cindy Levy  
Rita Lewenauer  
Carol Lewensohn  
Lynne Bazelon Lewin  
Ruben and Silvia Lewin  
Richard and Michelle Lewis  
Tobey Libber and Cheryl Stein Libber  
Joshua and Lindy Liberman  
Yefim and Betya Libershteyn  
Brian and Betty Lichtenstein  
Leo Lichter Memorial Fund  
Betty Lieberman  
Joan Lieberman  
Stan and Nancy Lieberman  
Ethel Lieberthal  
Mark and Pam Lieberthal  
Chaim and Miriam Liff  
Tom Lindow  
Aaron and Alyson Lippman  
Maureen F. Lipton  
Gabriel Litman  
Mark and Arlene Litow  
Simon and Raisa Livshits  
Karen Loeb  
Howard and Marlene Loeb  
Bruce and Marsha Loeb  
Jakob and Tamar Loewenberg  
Paul Loewenstein and Jody Kaufman  
Loewenstein  
Rick and Roberta London  
Tedd and Julie Lookatch  
Mel Johnson and Paula Lorant  
Barbara Lorman  
Marty and Beverly Love  
David and Pip Lowe  
Lubar Family: Sheldon and Marianne Lubar,  
David and Madeleine Lubar, Susan Lubar  
Solvang, Joan Lubar and John Crouch  
Alfred Lubar  
Bob Lubar  
Sara Lubar  
Chuck and Donna Luber  
Sari Luber  
Mark Lubinsky  
John Lubotsky  
Allan and Shari Luck  
Maureen and David Luddy  
Mark and Toby Lukoff  
Alan and Deborah Lurie  
Jim and Jodi Lurie  
Scott and Jodie Lurie  
Berele and Barb Lutsky  
James Madlom  
Sharon Madnek  
Mark and Staci Maiman  
Michael Maistelman  
Lois Malawsky  
Marina J. Maller  
Sandy and Katharine Mallin  
Norm and Sherry Malmon  
Andre and Mariana Mandache

Eileen and Barry Mandel  
Claire Shmitt Michelstetter and Robert Mandel  
Shmuel and Chana Mandelbaum  
Benjamin and Ellen Mandelman  
Audrey Mann\*  
Chip and Kate Mann  
Ouri and Elissa Marciano  
Harriet Marcus  
Rick and Jane Marcus  
Stephen and Janice Marcus Family:  
Greg and Linda Marcus, David and Melina  
Marcus  
Steve and Donna Marcus  
Susan Marcus, Jodi and Steve Weber and  
Family  
Alan and Rita Marcuvitz  
Jonathan and Marjorie Margolies  
Adam and Dana Margolis  
Ann Margolis  
Bud and Judy Margolis  
David and Jody Margolis  
Bob and Wynne Markey  
David and Rachael Marks  
Ellery Marks  
Jerome and Marlene Marks  
Rabbi Rachel Marks  
Leatrice and Lewis Marshak  
John Martinson  
Alan and Judy Matsoff  
Helen Mautner  
Tuck and Leigh Maxon  
Dr. Michael and Deborah Mazius  
Chanan Posner and Tanya Mazon-Posner  
Noel McGrath  
Scot and Bonnie McLean  
Nancy Weiss McQuide and Mark McQuide  
Rabbi Peter and Barbara Mehler  
Rabbi Daniel and Beth Meister  
David and Barbara Meister  
Janet Meister  
Jennifer and Richard Meldman  
Robert Meldman  
Yehuda Yannah and Marie Mellott  
Jerry Melnick  
Howard and Evelyn Melton  
Alan Mendeloff  
Steven Cohen and Debbie Mendeloff  
Roberta Mendelsohn  
Bailee Mendelson  
Robert and Barrie Merar  
Randy and Linda Merkel  
Howard and Shari Messerman  
Ann Meyer  
Al and Dorothy Meyers  
Barbara G Meyers  
Yevgeny and Oleg Milenky  
Brian and Stephanie Miller  
James and Felicia Miller  
Janet Miller  
Jay and Bobby Miller  
Nancy Miller  
Ray and Marsha Miller  
Ron Miller and Susan Angel Miller  
Mike and Janet Minkin  
Terri Minkin  
Marshal and Rita Mirviss  
Bernadette Mitchell  
Lynda Mitz  
Stacy Mitz



## OUR DONORS

Rozene and Matthew Mixon  
Steve and Rusti Moffic  
Marcy Moll  
Amy Moller  
Mark and Jequita Molot  
Edward and Polina Morgulis  
Joan Morris  
Polly Morris  
Shelley London and Ehud Moscovitz  
Eric Kaplan and Barbara Moser  
Cheryl and Mitch Moser  
David and Sally Moskol  
Val and Elana Moznaim  
Yuriy and Lyudmila Moznaim  
Ann Muchin  
Muk Luk Footwear Company  
Howard and Elaine Myers  
Greg Strick and Armona Nadler-Strick  
Morton Naiman  
Burton and Judy Naimon  
Armin and Hollie Nankin  
David and Abigail Nash  
Kevin and Lori Nashban  
Santiago Navarro  
Kira Nehmer  
Elaine Nelles  
Randy and Judy Nelson  
Yefim and Tatyana Nemirovsky  
Jim and Elizabeth Neubauer  
Tom Bush and Rosie Neufeld  
Steve and Kathy Neufeld  
Ilsa Neurath-Malkin Memorial Fund  
Barbara Neville  
Larry and Barbara Newman  
Margie Nieder  
Scott and Lauralyn Noll  
Jeffrey and Annette Nye  
Alan and Diane O'Connor  
Ryan and Lauren O'Desky  
Judy O'Hara  
Hans Ohren  
Emil and Sheila Orcholski  
Miriam (Red) Orenstein\*  
David and Deborah Orman  
Rudolph Ostach Memorial Fund  
Elizabeth Brenner and Steve Ostrofsky  
Joe Berger and Vicki Owens-Berger  
Michele Oxman  
Dr. Sharon Pace  
Larry and Ronna Pachefsky  
Kevin and Sarah Packman  
Nick and Janet Padway  
Vicky Padway  
Lynn and Diane Pagenkop  
David and Mindy Palay  
Dottie and Gil Palay  
Bruce and Sandra Paler  
Chris Paler  
Debbie Paler  
Rick and Leslie Paler  
Mimi Paley  
Phil and Dorene Paley  
Robert and Sharyl Paley  
David and Janna Papermaster  
Leonard and Gloria Parker  
Judith Parola  
Brian and Judy Parrish  
Dr. Sanford and Rhoda Parsons

Morris Parzen  
Mark and Laurie Pasch  
Mark and Sally Pass  
Randall and Felice Pasternak  
Eugene Paykel  
Carla Perason  
Larry and Karen Pearson  
Adam and Laura Peck  
Bruce and Jeanette Peckerman  
Stuart Peckerman  
Claudio and Sheryl Pelc  
Harry Pelman  
Barbara Peltin  
Sherwin and Julie Peltin  
Arnie and Cathy Peltz  
Joe and Miriam Peltz  
Harry and Marilyn Pelz  
Arnold Pereira  
John and Susan Pereles  
Marshall Perlman  
Boyd and Barbara Perlson  
Michael and Susan Persten  
Beth Peterman  
Ruth Peterman  
Steve and Laurie Pevnick  
James Phillips  
Ken and Julie Phillips  
Nancy Phillips  
Yvonne Pick  
Neil and Karen Pinsky  
Rabbi Yechiel and Shaindy Pinsky  
Gail Pittelman  
Joel and Susan Pittelman  
Mark and Carin Pittleman  
Jill and Jay Plavnick  
Louis and Claire Plotkin  
Neal and Nancy Plotkin  
Richard and Penny Podell  
Harvey and Diana Pogoriler  
Alan and Carol Pohl  
Andrew Pokrass  
Jerry and Jill Polacheck  
Dr. Larry and Bobbi Polacheck  
Marvin and Gail Poll  
Mark and Barbara Pollack  
Samantha Pollock  
Michael and Karen Polsky  
Lou Koplin and Eva Ponce  
Rachel Poulin  
Goldie Powiazier Memorial Fund  
Sally Presnal  
Matthew and Mindy Price  
Evan and Jessie Primakow  
Jordan Primakow  
Michael and Sheryl Primakow  
Harry\* and Edith Pump  
Tom and Andi Rabenn  
Larry and Lori Rabin  
Charles Markman and Janet Rader  
Irving and Byrda Raffe  
Shirley Raffe  
Cherie Raffel  
Robert Ragir and Meyer and Norma Ragir  
Foundation  
Susan Raines  
Harry Rapkin  
Rabbi Menachem and Hudi Rapoport  
Bonnie Rappaport

Beth Kushner and Marc Rasansky  
Max and Cindy Rasansky  
Rabbi Michael and Yocheved Rauch  
Margot Raz  
Barbara Recht  
Roger Carp and Debbie Recht  
Toby Recht  
Philip and Jacqueline Redlich  
Nyama Reed  
David and Kris Reicher  
Rosalie Rellin  
Jan Resnick  
Pamela Resnick  
Michael and Sara Reuben  
Timothy and Syma Richer  
Adrian Richfield  
Todd and Susan Richheimer  
Werner and Carol Richheimer  
Fran and Steve Richman  
Josh Richman  
Arthur and Lynda Rickun  
Representative Daniel Riemer  
Allen and Pat Rieselbach  
Edith Riesz  
Richard and Joan Rocamora  
Mike and Janice Rochwerger  
Isaac and Mehri Rokni  
Anne and Gerald Rosen  
Harold and Evelyn Rosen  
Jeffrey and Linda Rosen  
Ruth Rosen  
Sheldon and Laila Rosen  
Anne and David Rosenberg  
Martin Barnes and Jan Rosenberg  
Lucy Rosenberg  
Mike Rosenberg  
David and Julie Rosene  
Dan and Julie Rosenfeld  
Hannah Rosenthal  
Lori Rosenthal  
James and Carol Ross  
Rob and Lauri Roth  
Harriet Rothman  
Vivian Rothschild  
Mrs. Merton (Dottie) Rotter  
Frank and Joyce Rubensohn  
Joyce Rubensohn  
Phillip Rubenstein Special Tzedakah  
Endowment  
Andrew Rubin  
Harry and Debby Rubin  
Jerry Rubin  
Jonathan and Sheryl Rubin  
Sandra Rubin  
Adam Winkelman and Dana Rubin-Winkelman  
Bev Rubinstein  
Dena and Neil Rubnitz  
Steven and Stephanie Rubnitz  
Jesley and Sonya Ruff  
Holly and Michael Russek  
Steve and Myra Russek  
Eric and Jennifer Saber  
Barbara Sable  
Bryan and Alicia Sadoff  
Michael and Julie Sadoff  
Rick and Marcia Sadowsky  
Ron and Wendy\* Sager  
Bob Saichek

Hava Salama  
Jerry and Judy Salinsky  
Jim and Lori Salinsky  
Dr. Mitchell Saltzberg  
Howard and Debbie Saltzman  
Shelly M. Sampon  
Linda Gale Sampson  
Steven J. Sampson Charitable Fund, Inc.  
Allen Samson and Vicki Boxer Samson  
Rabbi Yoseph Samuels  
Bernard and Marie Sandler  
Mitchell and Nancy Sandler  
Steven Sandler  
Jay and Bridget Sandlow  
David and Joyce Sandock  
Jon Sanfilippo  
Marc and Joan Saperstein  
Fannie Sapir  
Mike and Lisa Sattell  
Hannah Sattler  
Larry and Una Sattler  
Dr. Marvin\* and Joyce Sattler  
Kenneth and Janet Sax  
Alvin and Christine Schachter  
Eric and Randi Schachter  
Stephen and Rabbi Toba Schaller  
Zvi Frazer and Karen Schapiro  
Mildred Schapiro  
Andrew and Michelle Schara  
Marc and Carol Schatz  
Brian and Deborah Schermer  
Eliot and Marylyn Scheuer  
William and Charlotte Schield Memorial  
Endowment  
Andy and Jill Schlesinger  
Mel and Iris Schlesinger  
Greg and Tracey Schley  
Manfred and Zelma Schloss  
Mike and Ellen Schlossmann  
Yosef and Yoni Schluskel  
Bob and Joan Schmidman  
Gerry Schmidman  
Mark and Amelia Schmidt  
Sandy Schmidt  
Andrea and Rodd Schneider  
Stuart and Marcy Schneider  
Tom Schneider  
Steve and Susie Schneiderman  
Barbara and Howard Schnoll  
Dan and Tamara Schnoll  
Mark and Julie Schnoll  
Sherwin and Linda Schnoll  
Steven and Susan Schnoll  
Howard and Sue Schoenfeld  
James and Rochelle Schoonover  
Brian King and Sarah Schott  
Alan and Barbara Schrinsky  
Hans Schroeder  
Dr. David Goldberg and Dr. Kristin Schroederus  
Mark Schubert  
Mona Schudson  
William and Caroline Schulhof  
Gerald and Judith Schumacher  
Phil and Mary Schuman  
Ari Schupper  
Ellen Frieber Schupper and Brian Schupper  
Ethan Schupper  
Gabriel Schupper

Jeff and Lynne Schuster  
Jeffrey Schuster  
Marcia Schuster  
Mark Schuster  
Gary and Rhonda Schutkin  
Jessie Schwade  
Shari Schwade  
Carol Schwartz  
David and Terry Schwartz  
Joan Schwartz  
Michael and Debbie Scribner  
Daniel White and Mara Sedlet  
Richard and Michele Seesel  
Adam and Gretchen Segal  
Dean and Laurie Segal  
Marc Altman and Arlene Segal-Altman  
Cathy Segall  
Marsha Sehler  
Max Seigle  
Micki Seinfeld  
Dennis and Mary Anne Selby  
Dick Selby  
Bud and Sue Selig  
Adrienne Pollack-Sender and Neville Sender  
Neil and Edith Shafer  
Bonnie and Dr. Fred Shafrin  
Barbara Shafton  
Dr. Corey and Rabbi Shari Shamah  
Ruth Irvings and Amy L. Shapiro  
Danny and Tera Shapiro  
James and Rhea Shapiro  
Mark and Sharon Shapiro  
Ron and Beth Shapiro  
Rabbi Ronald and Judy Shapiro  
Peter and Arlene Shelley  
Robyn Shepard  
Armin Sher  
Chuck Blumenfeld and Cobby Shereff  
Larry and Maureen Sherkow  
Doris Sherman  
Patti Sherman-Cisler  
Stan and Barbara Sheyer  
Howard and Nancy Shimon  
Michael and Julie Shlensky  
Dr. Alan M. Shlimovitz  
Mendel and Devorkie Shmotkin  
Yisroel and Devorah Shmotkin  
Daniel Shovers  
Lili Shtern  
Semyon and Kristin Shtulberg  
Gladys Shukur  
Sydelle Shulkin  
Howie Siegal  
Bud and Esther Siegel  
Donald Siegel  
Eric and Lisa Siegel  
Jeffrey and Erika Siegel  
Neil and Terri Siegel  
Sandi Siegel  
Sarah Siegel  
Steven Picus and Sharon Siegel  
Lee and Estelle Siegman  
Olivier Reiher and Malika Siker  
David Silber  
Charles and Adele Silberg  
Richard and Linda Silberman  
Judy and Jim Silbermann  
Leila Silverberg

Steve and Janet Silverman  
Tod Silverman  
Wendy Silverstein  
Albert and Barbara Simon  
Gary and Sharon Simon  
Marilyn Simons  
Phil Simrod  
Leslie and Marcia Singer  
Dan Sinykin and Jodi Habush Sinykin  
Susie Sinykin  
Stephen and Trudy Sirkis  
Paul and Cheryl Sklar  
Lawrence Skorton  
Charlotte Slater  
Deb Slater  
Diane Slomowitz  
Dr. Jonathan and Shirley Slomowitz  
Zachary and Ruth Slomowitz Memorial Fund  
Hyman and Lillian Smith Memorial Fund  
Robert Smith  
George Levin and Sheila Smith  
Mark and Nancy Smuckler  
Gary and Diane Sobel  
Al and Joyce Solochek  
Binette Solomon  
Helen and Bernard Soref Memorial  
Endowment Fund  
Nita Soref  
Norman and Natalie Soref Memorial Fund  
Sandra Soref  
Leonid and Olga Soroka  
Howard and Jacque Sosoff  
Dawn Sostrin  
Rabbi Mordechai and Rivkie Spalter  
Ms. Deanna Spanjar  
Dianne Spector  
Dr. Jack and Beverly Spector  
Phyllis Spector  
Steve and Deka Spector  
Mike Sperling and Peggy Kirkeeng Sperling  
Alex Gopan and Tatyana Spiridonova  
Peter and Jodi Sprinkmann  
Bernie and Eileen Staller  
Bruce and Sandra Stark  
Bruce Weiss and Melinda Steffey  
Jason and Dori Steigman  
Barbara Stein  
Bud Stein  
Dan and Linda Stein  
Harold B. Stein  
Jeremy and Amanda Stein  
Kenny and Dee Stein  
Laurie Stein  
Louise Stein  
Mark and Patti Stein  
Robert and Karen Stein  
Nathaniel and Yael Stein  
Dr. Sam and Badonna Stein Memorial  
Victor Stein Memorial Fund  
Harriet Steinberg  
Carrie and David Steinberger and Family  
Marc and Brenda Stelzer  
Jeff and Jody Steren  
Ben and Erin Stern  
Ben and Ethel Stern  
Robert and Debbie Stern  
Scott and Sandy Stern  
Stier Construction Inc.

Brett and Amy Stone  
James and Joan Stone  
Richard Stone  
Rick and Sue Strait  
Nancy Strauss  
Armona Strick  
George and Bea Strick  
Audrey J. Strnad  
Richard and Susan Stuckert  
Craig Johnson and Paige Styler  
Irv and Jane Suesskind  
Anita Sundstrom  
Jeff Schwarz and Melinda Swartz  
Aaron Sweet  
Beverly Sweet  
Morgan Sweet  
Ronald A. Sweet  
Stephen and Rae Sweet  
Morton Swerdlow  
Fred Tabak  
Michael and Saralee Taibleson  
Rebecca Taibleson  
Geri Tarney  
Carol and Mike Tarnoff  
Bonnie Klein-Tasman and Marc Tasman  
Gary and Marci Taxman  
Myra and Royal\* Taxman  
Libby Temkin  
Rich Taylor and Kim Temkin-Taylor  
Diane Tenenbaum  
Victor and Ramona Tenorio  
Marilyn and Bob Teper  
David and Heather Teplin  
Stan and Judi Teplin  
Lillian Teplinsky  
Nici Teweles  
Martin and Sandra Thau  
Marvin and Barbara Tick  
Clifford Tisser  
William Toburen  
Howard and Judy Tolkán  
Yale and Florence Tolwin  
Tuvia and Karen Torem  
Jose Torres and Miriam Oliensis-Torres  
Walter I. Trattner  
Curt and Tammy Trau  
Jonathan and Ruth Treisman  
Bill and Sharon Trost  
Dusiya Tsesarskaya  
Moysey and Anna Tsyppkin  
Clarice S. Turer Charitable Fund  
David Cohen and Julie Turetsky  
Amy Turim  
Jack and Barbara Turner  
Rabbi Benzion and Chanie Twerski  
Rabbi Chaim Twerski  
Rabbi Michel and Feige Twerski  
Boris and Luda Tynkov  
Rodney and Dee Dee Ugent  
Barry and Leslie Usow  
Andrew Ewert and Lupe Ugent-Ewert  
Sam and Olga Vaynshtok  
John and Freddi Viel  
Irina Vlasova  
Barbara and Jerry Volk  
John and Lisa Vondra  
Jessica and Kent Vroman  
Lena Vusiker

Kurt and Denise Wadzinski  
Howard and Diane Wagan  
Paul Wagan  
Alan and Stephanie Wagner  
Ben and Rachel Wagner  
Charles and Laura Waisbren  
Dennis and Janice Waisman  
Robert and Helene Walerstein  
Michelle and Scott Wales  
Jonathan and Ruth Wallace  
June Wallace  
Neil Wallace  
Rabbi Hannah and Mr. Karl Wallick  
Beatrice Warren  
Jeff and Jodi Warren  
Rich and Susan Warren  
Dan and Judith Wasserman  
Alisa and David Wasserman  
Jeff and Ilene Wasserman  
Merle H. Wasserman  
Russell and Melanie Wasserman  
Sheldon Wasserman  
Greg and Wendy Watchmaker  
Andrea and Michael Waxman  
Daryl and Julie Webb  
Adrienne Weber  
Dan Weber and Shelley Budney Weber  
Harriet and Sally Weber  
Mark Weber  
Patti Weigler  
Rick Weil  
Fred and Linda Wein  
David and Sherry Weinberg  
Harley R. Weinberg  
Matthew and Rachel Weinberg  
Nelson and Linda Weine  
Shirley Weiner  
Shari Weingrod  
Leo and Renee Weinshel  
Michael and Jill Weinshel  
Sandy Weinstein  
Harry F. Weisberg Memorial Fund  
Louis Weisberg  
Steven and Kristen Weisman  
Suzy and Gerald Weisman  
Al and Carol Weiss  
Arnold and Harriet Weiss  
Barbara Weiss  
Sheila Weiss  
Leonard and Susan Weistrop  
Helene Weisz  
Betty Weitzen  
Janet and Walter Wellenstein Endowment  
Steve and Judy Werlin  
Barry Werner  
David and Cindy Werner  
Steve and Tina Werner  
Steve and Lorie Wertheimer  
Phil and Arlene Wesson  
Keith Lindenbaum and Kathy Wheatley  
David Whitaker  
Paul and Rochelle Whiteman  
Mark and Susan Wichman  
Matt and Aree Wichman  
Liza and Jim Wiemer  
Gloria Wiener  
John Hirsh and Sue Wile  
Daniel and Diana Wilets

Sara Wilkins  
Daniel Wilkinson  
Sonia Willenson  
Sid and Holly Williamson  
Chuck Wimpee  
Sondra Winnik  
Bruce and Susan Winter  
Chaim Winter  
Michael and Sylvia Winter  
Muriel and Jack Winter Family Fund  
Rick and Jackie Winter  
Fred and Esther Wiviott  
Marvin Wolfman  
David and Diane Wolfson  
Judy Wolkenstein  
Natalie Wolman  
Karen Wood  
Mary Wurzburg  
Penny and Stan Wynn  
Isa & The Honorable Glenn Yamahiro  
Yelena Yampolskaya  
Scott Yauck  
Albert and Margarette Yee  
Kerri and Laurence Yudkovitch  
Richard and Kay Yuspeh  
Aleksandr and Yelena Zakaryants  
Dave and Judith Zaks  
David and Sally Weber  
Lilyan Zarem  
Marshall Zarem  
Eva Zaret  
Neal and Susan Zechman  
Howard and Jane Zeft  
Michael Zeiger  
Susan Zellin  
Alan and Beverly Zembrosky  
Jeff and Kate Zembrosky  
Dean and Debbie Zemel  
Nancy Zetley  
Randall Rowlett and Linda Zetley  
Elizabeth Levins and Herbert Zien  
Joseph\* & Vera\* Zilber Family Foundation  
Mike and Andi Zimmerman  
John and Jill Zimmerman  
Mari-Claire and William Zimmerman  
Neil and Jane Zimmerman  
Steve and Sarah Zimmerman  
Margo Zimmermann  
Dr. David and Carol Zolot  
Donald and Janet Zoltan  
Clarice Zucker  
Eve Joan Zucker  
Betty Weitzen  
Nadine Zuckerman  
Yoni and Julie Zvi  
Anonymous - 98

\*Of blessed memory

# Giving Societies

## 2019 MEMBERSHIP

**KING DAVID SOCIETY** The Milwaukee Jewish Federation is proud to honor the members of the King David Society who made individual or family gifts of \$25,000 or more to the 2019 Annual Campaign.

ANON Charitable Trust  
Debbie and Mark Attanasio  
Isabel and Alfred\* Bader  
Bader Philanthropies, Inc.  
Linda and Daniel Bader  
Foundation  
Cheryl and Mark Brickman  
Amy and Frederick Croen  
CT Charitable Fund  
Ruth and James Fromstein  
Rosalie Schlitz Gellman  
Bruce Gendelman Family  
Idy Goodman  
Betsy and Michael Green  
Mimi and Robert Habush  
Kari and Kurt Janavitz  
Debra and Moshe Katz  
Herbert H. Kohl Charities, Inc.  
Arlene and Joel Lee  
Lubar Family:  
Sheldon and Marianne Lubar,  
David and Madeleine Lubar,  
Oyvind Solvang and Susan Lubar  
Solvang, Joan Lubar and  
Dr. John Crouch

Kristine MacDonald  
Eileen and Barry Mandel  
Stephen and Janice Marcus  
Family: Greg and Linda Marcus,  
David and Melina Marcus  
Rita and Alan Marcovitz  
Abbie and David Nash  
Dottie and Gilbert Palay  
Marilyn and Harry Pelz  
Lauri and Robert Roth  
Drs. Lynne Langlois and Frederick  
Schaumberg  
Andrea and Rodd Schneider  
Suzanne and Allan "Bud" Selig  
Daniel M. Soref Charitable Trust  
Nita Soref  
Louise Stein  
Sue and Richard Strait  
Eve Joan Zucker

\*Of blessed memory

**JOSHUA SOCIETY** The Milwaukee Jewish Federation gratefully recognizes the members of the Joshua Society who made individual or family gifts of \$10,000-\$24,999 to the 2019 Annual Campaign.

Brian Stark and Debra  
Altshul-Stark  
Tanya and Bruce Arbit  
Marlene and Bert Bilsky  
Susan and Allan Carneol  
Jane and Stephen Chernof  
Drs. Judith and David Coran  
Penny and Jim Deshur  
Nina and Rich Edelman  
Laura and Dan Eder  
Laura and David Epstein  
Ettinger Family Foundation  
Suzy Ettinger  
Jaynie Skadron and Howard  
Frankenthal  
Jane Gellman  
Leila Goldin  
Bonnie and Leon Joseph  
Elana and Aaron Karan  
Stephanie Klurfeld  
Anne and Stephen Kravit  
Tracy and Michael Lappin  
Nancy and Arthur Laskin  
Marlene and Marvin Lauwasser  
Ellin and Gerald Levy  
Patti and Douglas Levy  
Joan Lieberman

Karen Loeb  
Jodi and Scott Lurie  
Janet Meister  
Nancy and Robert Miller  
Susan Angel Miller and Ron Miller  
Cheryl and Mitchell Moser  
Jeanette and Bruce Peckerman  
Cathy and Arnold Peltz  
Drs. Carol and Alan Pohl  
Samuel and Anne Rottman  
Charitable Trust  
Dottie Rotter  
Julie and Michael Sadoff  
Robert Saichek  
Suzanne LaFleur and  
Daniel Sapiro  
Holly and Brad Schlossmann  
Ellen and Michael Schlossmann  
Jodi and Dan Sinykin  
Jodi and Peter Sprinkmann  
Carol and Michael Tarnoff  
Myra and Royal\* Taxman  
Wendy and David Winograd  
Howard and Soli Zetley

\*Of blessed memory

**ANNUAL CAMPAIGN GIVING: \$1 MILLION+**  
The Milwaukee Jewish Federation is proud to recognize the following donors whose lifetime giving to the Annual Campaign is more than one million dollars. Our heartfelt thanks and appreciation to them for their service to our community and extraordinary generosity. May they go from strength to strength.

Bader Philanthropies, Inc.  
Audrey & Joseph\* Bernstein  
Cheryl & Mark Brickman  
Dr. Lewis & Patricia Chamoy  
Chudnow Family  
CT Charitable Fund  
Ettinger Family Foundation  
Betsy & Michael Green  
Robert & Mimi Habush  
Herb Kohl Charities  
Sidney & Dorothy Kohl  
Lubar Family Foundation, Inc.:  
Sheldon & Marianne Lubar,  
David & Madeleine Lubar,  
Joan Lubar & Dr. John Crouch,  
Susan Lubar Solvang & Oyvind  
Solvang and Kristine Lubar  
MacDonald

Marcus Family:  
Stephen & Janice Marcus,  
Joan Marcus\*, Greg & Linda  
Marcus, David & Melina Marcus  
and Andrew & Jill Marcus  
Gilbert & J. Dorothy Palay  
Harry & Marilyn Pelz  
Allan "Bud" & Suzanne Selig  
Nita Soref  
Barbara Stein  
Louise Stein  
Anonymous – 2

\*Of blessed memory



LION OF JUDAH ENDOWMENT

The Lion of Judah Endowment (LOJE) is the Women’s Philanthropy component of the Perpetual Annual Campaign Endowment (PACE) program. A LOJE gift guarantees that a donor’s annual Lion of Judah contribution to the Milwaukee Jewish Federation will continue every year in perpetuity. It is not a substitute for an annual gift; rather it continues annual giving in the donor’s name beyond her lifetime.

Ida Bursak*	Marianne Lubar
Flora Cohen*	Ilsa Neurath Malkin*
Rose Derzon*	Joan Marcus*
Ann Deshur*	Janet and Dr. Morris* Meister
Penny Deshur	Susan Angel Miller
Bobbi Dinkin	Cheryl and Mitchell Moser
Louise Eder*	Ruth Orenstein*
Elaine B. Friedman	Carol and Alan Pohl
Ruth Fromstein	Goldie Powiazer*
Rosalie Schlitz Gellman	Esther Leah Ritz*
Idy Goodman	Lauri Roth
Betsy and Michael Green	Andrea Schneider
Janet Greenebaum*	Suzanne Selig
Judy Guten	Ruth and Zachary Slomovitz*
Hildegard Katz*	Susan Lubar Solvang
Fannie Kesselman*	Nita Soref
Helaine Lane*	Susan and Richard Strait
Marlene Lauwasser	Lee Temkin*
Karen Loeb	
Jody Kaufman Loewenstein	*Of blessed memory
Joan Lubar	

LION OF JUDAH SOCIETY

The Lion of Judah is a national symbol of women's philanthropy, recognizing a woman's gift of \$5,000 or more or a family gift of \$10,000 or more to the 2019 Annual Campaign.

Tanya Arbit	Barbara Glazer
Debbie Attanasio	Caren Goldberg
Isabel Bader	Leila Goldin
Linda Bader	Idy Goodman
Nancy Barnett	Barbara Grande
Margery Becker	Eileen Graves
Cindy Benjamin	Betsy Green
Mindy Berman	Sharon Grinker
Audrey Bernstein	Judy Guten
Marlene Bilsky	Mimi Habush
Judy Bluestone	Helen Jacobs*
Cheryl Brickman	Kari Janavitz
Roberta Caraway	Louise Jesse
Susan Carneol	Bonnie Joseph
Jane Chernof	Elana Karan
Betty Chrustowski	Debra Katz
Judy Coran	Judi Ketten
Amy Croen	Stephanie Klurfeld
Betty Croen	Anne Kravit
Penny Deshur	Beth Kushner
Bobbi Dinkin	Suzanne LaFleur
Nina Edelman	Lynne Langlois
Laura Eder	Tracy Lappin
Laura Epstein	Nancy Laskin
Suzy Ettinger	Marlene Lauwasser
Ruth Fromstein	Arlene Lee
Jane Gellman	Lois LeVine
Rosalie Schlitz Gellman	Micaela Levine
Lori Gendelman	Cynthia Levy
	Ellin Levy
	Patti Levy

Lindy Liberman	Linda Gale Sampson
Betty Lieberman	Ellen Schlossmann
Joan Lieberman	Holly Schlossmann
Karen Loeb	Andrea Schneider
Jody Kaufman Loewenstein	Suzanne Selig
Joan Lubar	Bonnie Shafrin
Madeleine Lubar	Jodi Sinykin
Marianne Lubar	Jaynie Skadron
Jodie Lurie	Susan Lubar Solvang
Kristine MacDonald	Nita Soref
Eileen Mandel	Jodi Sprinkmann
Janice Marcus	Debra Altshul-Stark
Linda Marcus	Barbara Stein
Melina Marcus	Louise Stein
Rita Marcuvitz	Sue Strait
Ann Margolis	Carol Tarnoff
Janet Meister	Marci Taxman
Nancy Miller	Myra Taxman
Susan Angel Miller	Libby Temkin
Cheryl Moser	Kim Temkin-Taylor
Abigail Nash	Clarice Turer
Debra Palay	Leslie Usow
Mindy Palay	Stephanie Wagner
Sharyl Paley	Wendy Winograd
Jeanette Peckerman	Lisa Zetley
Cathy Peltz	Nancy Zetley
Marilyn Pelz	Soli Zetley
Carol Pohl	Eve Joan Zucker
Adrienne Pollack-Sender	
Barbara Recht	*Of blessed memory
Lucy Rosenberg	
Betsy Rosenblum	
Hannah Rosenthal	
Lauri Roth	
Dottie Rotter	
Julie Sadoff	

POMEGRANATE SOCIETY

The Midrash tells us that the pomegranate has 613 seeds corresponding with the number of mitzvot found in the Torah. The pomegranate is the symbol for a woman's gift of \$1,800 to \$4,999 or a family gift of \$3,600-\$9,999 to the 2019 Annual Campaign.

Karrie Adix	Andrea Florsheim
Sandra Albert	Neena Florsheim
Barbara Altman	Roberta Forman*
Esther Ancel	Frances Franklin
Joyce Appel	Marcia Fredlich
Naomi Arbit	Linda Freedman
Jane Avner	Susan Freeman
Marilee Bass	Evelyn Garfinkel
Muriel Becker*	Danni Gendelman
Donna Berg	Lori Gendelman
Karen Berman	Jane Gertler
Michele Berman	Peggi Glaser
Susan Bernstein	Pnina Goldfarb
Geraldine Biller	Paula Goldman
Roberta Bloch	Rebecca Goldman
Lynne Bomzer	Stephanie Goldstein
Elizabeth Brenner	Harriet Gordon
Phyllis Brostoff	Linda Gorens-Levey
Carla Cohen	Julie Gorens-Winston
Beverly Colton	Josette Grossberg*
Cynthia Cooper	Rebecca Guralnick
Rachel Cornfield	Sharon Guten
Justice Rebecca Dallet	Libby Gutterman
Robyn Eiseman	Rachelle Hart
Naomi Eisenstein	Dana Heffez
Karen Elliott	Kathleen Heilbronner
Beverly Erlien	Jody Herbert
Nancy Ettenheim	Sara Hermanoff
Roberta Fedderly	Barbara Himes
Roberta Fine	Noa Holoshitz

Bunny Honigman	Micky Sadoff
Ann Jacobs	Judith Salinsky
Bonnie Jacobson	Shelly M. Sampon
Kami Joseph	Vicki Boxer Samson
Deborah Kasle	Karen Schapiro
Mari Katz	Iris Schlesinger
Tamar Kelber	Jill Schlesinger
Debra Koenig	Barbara Schnoll
Kathryn Konik	Lynne Schuster
Pam Kriger	Marcia Schuster
Patti Langer	Rhonda Schutkin
Camilla Levin	Marsha Sehler
Sheri Levin	Barbara Shafon
Roberta London	Rabbi Shari Shamah
Donnalyn Maiman	Sandi Siegel
Lois Malawsky	Terri Siegel
Katharine Mallin	Nancy Smuckler
Audrey Mann	Joyce Solochek
Susan Marcus	Dori Frankel Steigman
Mindy Marcus-Graskamp	Diana Stein
Marjorie Margolies	Caryn Steinberger
Felicia Miller	Joan Stone
Terri Minkin	Audrey Strnad
Joan Morris	Melinda Swartz
Ann Muchin	Marilyn Teper
Hollie Nankin	Judith Teplin
Elizabeth Neubauer	Laura Waisbren
Rosalie Neufeld	Janice Waisman
Margery Nieder	Hannah Wallick
Jill Polacheck	Debra Watton
Sheryl Primakow	Jodi Weber
Cindy Rasansky	Sandra Weinstein
Susan Richheimer	Judith Werlin
Frances Richman	Susan Wichman
Anne Rosenberg	Deborah Zemel
Julie Rosenfeld	
Miryam Rosenzweig	*Of blessed memory

MAIMONIDES SOCIETY

The Maimonides Society honors members of the healing arts professions for their commitment to the Milwaukee Jewish Federation and its Annual Campaign. Members made an individual or family gift to the 2019 Annual Campaign of at least \$1,800.

Dr. Scott Arbit  
Dr. Ellis Avner  
Dr. James Barnett  
Dr. Irving Becker  
Dr. Paul Bernstein  
Dr. Susan Bernstein  
Dr. Harvey Bock  
Dr. Charles Bomzer  
Dr. David Coran  
Dr. Judith Coran  
Dr. Jerome Cornfield  
Dr. John Crouch  
Dr. Alan Daniel  
Dr. Anne Dayer  
Dr. Marc Eiseman  
Dr. Reuben Eisenstein  
Dr. Kenneth Fabric  
Dr. Lewis Feiges  
Dr. Stuart Fine\*

Dr. Mark Freedman  
Dr. Herbert Giller  
Dr. Mark Glazer  
Dr. Allan Goldman  
Dr. Michael Gordon  
Dr. Robert Gordon  
Dr. Peter Graskamp  
Dr. Glenn Graves  
Dr. Sidney Grossberg  
Dr. Jon Gudeman  
Dr. Michael Guralnick  
Dr. David Guterman  
Dr. Dan Heffez  
Dr. Mark Hermanoff  
Dr. Sidney Herszenon  
Dr. Todd Hirschtritt  
Dr. Noa Holoshitz  
Dr. Lawrence Howards  
Helen Jacobs  
Dr. Paul Jacobs

Dr. Marc Jacobson  
Dr. Michael Ketten  
Dr. Steven Koenig  
Jeff Langer  
Dr. Lynne Langlois  
Dr. Marvin Lauwasser  
Dr. Joshua Liberman  
Dr. Paul Loewenstein  
Dr. Richard London  
Dr. Mark Lubinsky  
Dr. Dennis Maiman  
Dr. Sanford Mallin  
Dr. Mindy Marcus-Graskamp  
Dr. Alfred Meyers  
Dr. David Moss  
Dr. David Nash  
Dr. Sharyl Paley  
Dr. Alan Pohl  
Dr. Larry Polacheck  
Dr. Marc Rasansky  
Dr. Werner Richheimer  
Dr. Lucy Rosenberg  
Dr. Robert Roth  
Dr. Robert Saichek  
Dr. Gerald Salinsky  
Dr. Mitchell Saltzberg  
Dr. Mitchell Sandler

Dr. Frederick Schaumberg  
Rhonda Schutkin  
Dr. Neville Sender  
Dr. Fred Shafrin  
Dr. Corey Shamah  
Dr. Alan Shlimovitz  
Dr. Mark Smuckler  
Dr. Bernard Staller  
Dr. Robert Stern  
Dr. James Stone  
Dr. Stanley Teplin  
Dr. John Traxler  
Dr. Barry Usow  
Dr. Charles Waisbren  
Dr. Sheldon Wasserman  
Dr. Greg Watchmaker  
Dr. Steven Werlin  
Dr. Mark Wichman  
Dr. James Winston  
Dr. Bruce Winter  
Dr. Howard Zeft  
Dr. Lisa Zetley  
Dr. Donald Zoltan

\*Of blessed memory

BENJAMIN CARDOZO SOCIETY

The Benjamin Cardozo Society celebrates the legal profession's commitment to the Milwaukee Jewish Federation and its Annual Campaign. Members made an individual or family gift of at least \$1,800 to the 2019 Annual Campaign.

Judge Lynn Adelman  
Bradden Backer  
Michael Bamberger  
Colleen Beaman  
Elliot Berman  
Joel Biller  
Bert Bilsky  
Gerald Bloch  
Charles Blumenfield  
Alan Brostoff  
Richard Buchband  
Thomas Bush  
Richard Canter  
Stephen Chernof  
Daniel Chudnow  
Adrian Cohen  
Frederick Croen  
Brad Dallet  
Justice Rebecca Dallet  
Gregory Devorkin  
Rhonda Devorkin  
Merrick Domnitz

Carl Dubin  
Nancy Ettenheim  
Richard Florsheim  
Douglas Frazer  
Rosalie Schlitz Gellman  
Franklyn Gimbel  
Bruce Glaser  
Caren Goldberg  
Daniel E. Goldberg  
Richard Goldberg  
Mark Goldstein  
Julie Gorens-Winston  
Robert Habush  
Michael Hart  
Rachelle Hart  
Bruce Harvey  
Thomas Herz  
Gail Hoffman  
Ann Jacobs  
Ronald Jacobs  
Deborah Kasle  
Tamar Kelber

Debra Koenig  
William Komisar  
Stephen Kravit  
Michael Lappin  
Joel Lee  
Michael Levey  
James Levin  
Jaime Levine  
Michael Levine  
Patti Levy  
Keith Lindenbaum  
David Lowe  
Madeleine Lubar  
Michael Maistelman  
Robert Mandel  
Greg Marcus  
Alan Marcuvitz  
Jonathan Margolies  
Marjorie Margolies  
Stephanie Melnick  
Felicia Miller  
James Miller  
Mitchell Moser  
Ann Muchin  
Howard Myers  
M. Nicol Padway  
Bruce Peckerman  
James Phillips  
Mark Pollack

Michael Polsky  
Allen Rieselbach  
Holly Russek  
Michael Russek  
Vicki Boxer Samson  
Karen Schapiro  
Andrea Schneider  
Rodd Schneider  
Steven Schnoll  
Donald Schoenfeld  
Jeffery Schuster  
Cobby Shereff  
Jodi Sinykin  
Albert Solochek  
Michael Sperling  
Thomas St. John  
Brian Stark  
Harold Stein  
Benjamin Stern  
Michael Tarnoff  
Robert Teper  
William Tyroler  
Alan Wagner  
David Weber  
Fred Wiviott  
Dean Zemel

Jewish Community Foundation Signers of the Book of Life

Individuals and families who establish endowments or create other after-lifetime gifts are eligible to sign the Book of Life with a personal essay and a photo. We thank the following donors for sharing their personal histories and their hopes for the future.

Edie & Albert Adelman\*  
Elaine Appel  
William Appel  
Deborah & Jerome Aronson\*  
Nancy & Jim Barnett  
Pearl & Nathan Berkowitz\*  
Kathie Bernstein  
Alan & Robi Borsuk  
Mark E. Brickman  
George Bursak\*  
Doris Hersh Chortek\*  
Anita & Avrum Chudnow\*  
Flora & Arthur Cohen\*  
Neiland Cohen  
Lucile Cohn\*  
Alice & Gerald Colburn\*  
Aidee & Sam Cooper\*  
Betty Croen  
Albert Deshur\*  
Penny & Jim Deshur  
Harriet & Jerome Dorf  
Marianne & Ely Epstein\*  
Suzy Ettinger  
Carol Kirsch Fishman  
Elaine B. Friedman  
Ruth Fromstein  
Rosalie Schlitz Gellman  
Danni & Shel\* Gendelman  
Doris & Max\* Gendelman

Ruth & Dr. Herbert Giller\*  
Idy Goodman  
Seema Gorens  
Betsy & Michael Green  
Janet & Donald Greenebaum\*  
Herbert Leon Gronik\*  
Judy Segall & Dr. Gary\* Guten  
Mimi & Robert Habush  
Richard C. Hack  
Joseph Hirschberg  
Lorraine Hoffmann\*  
Sandy Hoffman\*  
Betty\* & Dr. Paul Jacobs  
Robyn Glick Jensen & Alan P. Jensen  
Bonnie Bockl and Leon Joseph  
Harry Kanin  
Judith & Alvin\* Kaplan  
Mort\* & Claire Komisar  
Judy & Bernard Kristal  
Marlene Lauwasser  
Marvin Lauwasser  
Phyllis Lensky  
Lloyd Levin  
Betty & Sidney\* Lieberman  
Karen Loeb  
Elliot Lubar  
Hyman Wolfe Madnek\*  
Lois Malawsky & Dr. Jay Larkey\*  
Rita & Alan Marcuvitz  
Janet Meister  
Barbara & Laurance Newman  
Ruth & William Orenstein\*  
Arleen Peltz  
Marilyn & Harry Pelz  
Eileen Perlson\*  
Drs. Carol & Alan Pohl

Ann Raskin  
Werner and Carol Dee Richheimer  
Esther Leah Ritz\*  
Rozann Rockstein\*  
Lucille & Jack\* Rosenberg  
Dorothy & Merton\* Rotter  
Frederick J. Safer  
Rena Safer  
Judith & Gerald Salinsky  
Carol & B.J. Sampson\*  
Harry Samson\*  
Sandra Schmidt  
Beverly\* & Norman Schuminsky  
Florence & Marshall Schwid\*  
Robert Seinfeld\*  
Suzanne Selig  
Rubin Sharpe\*  
Marie & Leonard\* Siegel  
Nita Soref  
Esther & Jack Spector\*  
Barbara Stein  
Louise & Gerald\* Stein  
Susan Stein  
Maurice Surlow\*  
Karen Loeb  
Tracy Sweet\*  
Michael Tarnoff  
Leah Temkin\*  
Libby Temkin  
Howard Wagan  
Marian Weinberg\*  
Mae Marks-Willenson & Lawrence Willenson\*  
Melvin S. Zaret\*  
Selma Zeiger\*  
Charlotte Zieve\*

\*Of blessed memory



# Create a Jewish Legacy

The following donors have participated in Create a Jewish Legacy, a program that encourages individuals and families to create legacy gifts that will provide permanent support to the organizations they care about. All of us, regardless of age, wealth or affiliation, have the ability to help sustain a vibrant Jewish community now and into the future.



Joyce and Al Altman  
Jennifer and Ofir Amram  
Terry S. and David L. Amrani  
Esther and Fredric Ancel  
Sheila and Larry Appel  
Elaine and William Appel  
Joy and Steve Appel  
Merry\* and Dr. Jordan Atinsky  
Dr. Jane A. and Dr. Ellis D. Avner  
Linda and Daniel Bader  
Rachael and Martin Badt  
Carol and John Bannen  
Debra Gorra Barash and Cantor David Barash Carrie Barbakoff  
Hyland I. Barnes Memorial  
Nancy and Jim Barnett  
Judy and Steven Baruch  
Caren and Donald Bass  
Marilee and Eugene Bass  
Ilana and Rabbi Yossi Bassman  
Rachel Baum and Orrick Nahmmacher  
Rhoda Baumgarten  
Dr. Laurel and Dr. Brian Bear  
Stephen S. Becker  
Margery Becker  
Gregory Bell  
Robin Benedon  
Donna and Robert\* Berg  
Karen Berk  
Heather Berken  
Deborah Carter Berkson\* and Rabbi Marc Berkson  
Cantor Karen and Elliot Berman  
Audrey and Joseph\* Bernstein  
Deborah and Aaron Bernstein  
Kathie Bernstein  
Shannon and Nathan Bernstein  
Marlene and Bert Bilsky  
Maris and Harvey Bock  
Elisheva and Rabbi Aryeh Borsuk  
Robi and Alan Borsuk  
Richard Bragman Trust  
Clifford Bragman\*  
Mark Brickman Family  
Janine Bridgeford  
Lynn and Elliot Broch  
Ellis Bromberg

Rabbi Levi Brook  
Eileen Bruskevitz  
Dr. William Burns  
Deborah and Glenn Bushee  
Susan and Allan Carneol  
Nancy Carruth  
Linda and Jonathan Chernin  
Jane and Steve Chernof  
Doris Hersh Chortek\*  
Betty Chrustowski  
Jennifer Chudnow  
Melissa Chudnow and John Yopps  
Patricia Sherman-Cisler and Greg Cisler  
Lorraine\* and Dr. Donald J. Cohen  
Robin and Dr. Bernard Cohen  
David Cohn  
Amy and Frederick Croen  
Betty Croen  
Sue DaBaco  
Myriam and Shlomo Dary  
Ann and Albert Deshur Memorial  
Penny and James Deshur  
Marlene and Jerrold Deutsch  
Melanie and Joe Devorkin  
Anneliese and Max Dickman  
Gregory S. Dorf  
Harriet and Jerry Dorf  
Phyllis and Sheldon\* Dorf  
Jan Druetzler-Katz  
Molly Dubin  
Cynthia and Larry Eckert  
Chava and Cheski Edelman  
Kenneth Eichenbaum\*  
Robyn and Marc Eiseman  
Ruth Eisen\*  
Shana Elias  
Leah and Rabbi Levi Emmer  
Suzy Ettinger  
Neil Farber  
Melissa and Larry Feldmesser  
Deborah Carneol Fendrich  
Marilyn M. Fine\*  
Carol K. Fishman  
Florence and Harry\* Fishman  
Judy Flegel  
Miriam Fleming  
Neena and Rick Florsheim

Karen and Martin Forman  
Roberta Forman\*  
Sophia and Robert Fox  
Linda and Eli Frank  
Sarah and Jay Frank  
Linda and Mark Freedman  
Susan Freeman  
Yale and Nancy Freiman  
Susan and Robert\* Frieibert  
Joan Becker Friedman and Michael Friedman  
Werner Froehling  
Marla and Steven Frydman  
Yael and Crawford Gaines  
Amy and Jonathan Gelfman  
Danni Gendelman  
Jeff Gendelman  
Adam Gerol  
Maggie and Alexander Gertel  
Ellie Gettinger and Mitch Nelles  
Terri and Jeffrey Gingold  
Peggi and Bruce Glaser  
David Glenn  
Caren and Daniel Goldberg  
Frances and Mark Goldner  
Jill and Mark Goldstein  
Stephanie and Mark Goldstein  
Tracy and Rob Golub  
Idy and Bill\* Goodman  
Julie Gordon and Robert Rubovits  
Lois and Norman Gordon  
Karen and Jason Gottlieb  
Barbara and Donald\* Grande  
Eileen and Glenn Graves  
Betsy and Michael Green  
Beverly and Martin Greenberg  
Kathleen B. Grinker  
Leslie Grinker  
Sharon and Michael Grinker  
Devora and Rabbi Aaron Gross  
Laura and William Gross  
Libby and David Gutterman  
Mimi and Robert Habush  
Elizabeth and David Hallerman  
Dr. Orlee Hauser and Dr. Shay Pilnik  
Judith Hellman  
Rabbi Jacob Herber

Susan Hersh and Andrew Appel  
Elisheva and Hersh Hiller  
Lisa and James Hiller  
Rachel Hintz  
Sara and Nathaniel Hoffman  
Dr. Stuart Hoffman  
Lorraine Hoffmann\*  
Cese and Stanley Holland  
Alan M. Holman  
Penny and Michael Hool  
Christy and Adam Horn  
Jennifer and Samuel Huber  
Daniel Hyman  
Jenya Iuzzini-Seigel and Matthew Seigel  
Betty\* and Paul Jacobs  
Dr. Diane and Dr. Terry Jacobs  
Helen Jacobs\*  
Bonnie and Jack Jacobson  
Stewart Jadofsky  
Bonnie Bockl Joseph and Leon Joseph  
Dawn and Mark Jubelirer  
Juliet and Reuben\* Kahn  
Richard L. Kahn  
Dr. Jessica and Rabbi Wes Kalmar  
Deborah Kalmar  
Elsie and Harry J. Kanin  
Ruth and Jason Kantrowitz  
Grace Kaplan  
Judith and Alvin\* Kaplan  
Elana and Akiva Karan  
Sara and Ben Karan  
Judy and Howard Karsh  
Cynthia and Marc Kartman  
Lee and Stan Kass\*  
Aaron Katz  
Debra and Moshe Katz  
Roberta and Elliott Katz  
Cindy and Michael Katzoff  
Reenie and Gary Kavalar  
Joan and David Kazan  
Tamar Kelber and Brian Feiges  
Laurie and Bruce Kestelman  
Judi and Michael Ketten  
Audrey and Jack Keyes  
Diane and Bruce Keyes  
Mara and Matthew Kleiman

Rosalind and Stanley Klein\*  
Donna and Leo Kleiner  
Paul Knell  
Alexa Kohlenberg  
Pamela and Ronald Kohlenberg  
Maureen Komisar  
Rebecca K. Komisar  
Andrea and Richard Konz  
Benjamin Kranitz  
Megan Kraus and Charles Truitt  
Judith and Bernard Kristal  
Bonnie and Gerardo Krisztal  
Steve Kurzon  
Debbi and Jay Lakritz  
Marlene and Marvin Lauwasser  
Mary Jo and Don Layden  
Kippy and Sylvan Leabman  
Felissa Lee  
Manny Leno\*  
Judith and Rabbi Melech Lensky  
Phyllis E. Lensky  
Linda Leshin  
Barbara and Dr. Michael Levin  
Sheri and Lloyd Levin  
Leah and Rabbi Nachman Levine  
Lois LeVine  
Micaela Levine and Thomas St. John  
Cynthia and Mark Levy  
Hara Levy and Carl Crawford  
Patti and Douglas Levy  
Cheryl Stein-Libber and Tobias Libber  
Betty and Sidney\* Lieberman  
Karen Loeb  
Marlene and Howard Loeb  
Jody Kaufman Loewenstein and Dr. Paul W. Loewenstein  
Roberta and Richard London  
Julie and Tedd Lookatch  
Elliot M. Lubar  
Joan Lubar  
Marianne Lubar  
Sally and William Lyne  
Ruth and Hyman Madnek\*  
Staci and Mark Maiman  
Harry Makowski\*  
Chana and Shmuel Mandelbaum  
Frida Mandelblum and Scott Winkler  
Chaya Mann  
Kathryn and John Mann  
Menachem M. Mann  
Jane and Richard Marcus  
Susan Marcus  
Rita and Alan Marcuvitz  
Marjorie and Jonathan Margolis  
Dana and Dr. Adam Margolis  
Judith and Irwin Margolis  
Rachael and David Marks  
Rocille McConnell  
Mark Mendelsohn  
Dr. Jay A. Met  
Jeane and James Meyers  
Dana and Brian Michael  
Bobby and Jay Miller  
Felicia and James Miller  
Stephanie and Brian Miller

Susan Angel Miller and Ron Miller  
Terry and Todd\* Miller  
Lynda and Sanford\* Mitz  
Cheryl and Mitch Moser  
Mary and Terry Murphy  
Daniel Myers  
Armona Nadler-Strick  
Hollie and Armin Nankin  
Elaine Nelles  
Judy and Randy Nelson  
Elizabeth and James Neubauer  
Lauren and Ryan O'Desky  
Deborah and Rabbi David Ordan  
Ronna and Larry Pachefsky  
Sarah and Kevin Packman  
Janet and Nick Padway  
Lynne and Richard Pearson  
Laura and Adam Peck  
Michaela and Jeffrey Peck  
Jeanette and Bruce Peckerman  
Joe Peltz  
Marilyn and Harry Pelz  
Susan and Jason Pelz  
Theodore Pincus\*  
Gail Reva Pittelman  
Jill and Jay Plavnick  
David Plavnick  
Carol C. Pohl  
Rochelle and Lanny Polansky  
Tanya Mazor-Posner and Chanan Posner  
Sheryl and Michael Primakow  
Inna and Eric Pullin  
Estelle Pump  
Robert Rabinoff  
Feiga and Rabbi Dovid Rapoport  
Hudi and Rabbi Menachem Rapoport  
Moshe Rapoport  
Barbara and Paul Rector  
Elizabeth and William Reilly  
Rosalie Rochwenger Rellin  
Michael Reynard  
Carol Dee and Werner Richheimer  
Fran and Steve Richman  
Patricia F. Rieselbach  
Leah and Rabbi Yerachmiel Robbins  
Joan and Richard Rocamora  
Carol and Behnam Rokni  
Kari and Richard Rosen  
Dr. Zachary Rosen  
Dr. Lucy and Jack\* Rosenberg  
Michael Rosenberg  
Edward Rosenthal  
Hannah Rosenthal  
Michal Frankel Rosenthal  
Susan and Alan Rosenthal  
Marilyn Ross Revocable Trust  
Richard Ross  
Lauren and Dr. Robert Roth  
Harriet and Stuart\* Rothman  
Dorothy and Merton\* Rotter  
Sheryl and Jonathan Rubin  
Debby and Harry Rubin  
Michelle and Rabbi Charles Rubovits  
Alicia and Bryan Sadoff

Julie and Michael Sadoff  
Rena and Fredrick Safer  
Stefanie Sager  
Shimon Salama  
Judith and Gerald Salinsky  
Lori and Jim Salinsky  
Judith and Arthur Saltzstein\*  
Nathaniel Sattler  
Karen Schapiro and Douglas Frazer  
Marylyn and Eliot Scheuer  
Yonina and Rabbi Michael Schluszel  
Amelia and Mark Schmidt  
Sandra S. Schmidt  
Andrea and Rodd Schneider  
Sarah Schott and Brian King  
Caroline and William Schulhof  
Gerald Schwartz  
Talía Schwartz  
Debbie Scribner  
Joseph C. Sectzer  
Michele and Richard Seesel  
Rabbi Shari and Dr. Corey Shamah  
Amy H. Shapiro  
Sharon and Mark Shapiro  
B. Deborah and Rabbi Israel Shmotkin  
Devorkie and Rabbi Mendel Shmotkin  
Doris Shneidman  
Eric Siegel  
Barbara and Albert Simon  
Jodi Habush Sinykin and Dan Sinykin  
Susie Sinykin  
Stephen and Trudy Sirkis  
Diane Slomowitz  
Susan Lubar Solvang  
Joan Spector  
Jodi and Peter Sprinkmann  
Rachel and Scott Steele  
Melinda Steffey and Bruce Weiss  
Jason Steigman  
Rabbi Moishe Steigmann  
Amanda and Jeremy Stein  
Barbara Stein  
Dee and Ken Stein  
Levi Stein  
Louise and Gerald\* Stein  
Margery and Martin Stein  
Samuel Stein  
Terri Peckerman-Stein and Mike Stein  
Sandra and Scott Stern  
Susan and Richard Strait  
Melinda Swartz and Jeff Schwarz  
Elaine and James Sweet  
Fred Tabak  
Max Taglin\*  
Saralee and Michael Taibleson  
Zabrina Tamarkin  
Michael Tarnoff  
Marci and Gary Taxman  
Libby Temkin  
Melissa and David Tepper  
Michael Tepper

Doba and Yechezkel (Chezky) Thaler  
Yale Tolwin  
Ruth and Jonathan Treisman  
Julie Turetsky and Rabbi David Cohen  
Blima and Rabbi Chaim Twerski  
Chanie and Rabbi Benzion Twerski  
Fredlyn and John Viel  
Diane and Howard Wagan  
Rachel and Benjamin Wagner  
Stephanie and Alan Wagner  
Michelle and Scott Wales  
Ruth and Jonathan Wallace  
Alisa and David Wasserman  
Melanie and Russell Wasserman  
Wendy and Sheldon Wasserman  
Jill and Michael Weinschel  
Barbara and Stephen Weinstein  
Harry F. Weisberg\*  
Dr. Stephen Weissman  
Helene Weisz  
Rhoda Wertheimer  
Steve Wertheimer  
Tzvi Werther  
Debbie and Jerrold S. Wicentowski  
Daniel David Wilkinson  
Rivka and Rabbi Betzael Wilschanski  
Sylvia and Michael Winter  
Morrie Wolfe  
Penny and Stanford Wynn  
Susan and Neal Zechman  
Suzanne and Dr. Jeffrey Zigun  
Deborah and Marc Zionts  
Eve Joan and James\* Zucker  
Nadine C. Zuckerman  
Susan Zukrow  
Julie and Yonatan Zvi

\*Of blessed memory

## Our mission

Through the development of community-wide financial support, planning and allocations, the mission of the Milwaukee Jewish Federation is to ensure the continuity of the Jewish people, to enhance the quality of Jewish life and to build a strong and unified Jewish community in Milwaukee, in Israel and throughout the world.

In fulfilling its mission, the Federation is committed to the principles of *Klal Yisrael* (the collective unity of the Jewish people), *Tzedakah* (the obligation to care for one another) and *Tikkun Olam* (improving the society in which we live).



The cover photos were taken at the Milwaukee Jewish Federation's community gathering following the shooting at the Tree of Life congregation in Pittsburgh in October 2018.





**MILWAUKEE**  
JEWISH FEDERATION

1360 N. Prospect Ave. | Milwaukee, WI 53202  
(414) 390-5700 | [MilwaukeeJewish.org](http://MilwaukeeJewish.org)