

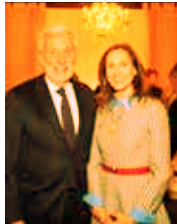


It's moments like this

Today. Tomorrow. Always.



MILWAUKEE
JEWISH FEDERATION



The Jewish people are one people, an evolving tapestry of dreamers and doers who capture the diversity of Jewish life.

The tapestry is created by individual moments when we become something greater than ourselves. Moments when we raise our voices against hate, when we feel safe enough to gather in prayer, when we support our neighbors in need. Together — and only together — are we able to move from today to tomorrow with strength and compassion.

Alongside our partner agencies in Milwaukee, in Israel and all corners of the world, our community is making a lifechanging impact on the Jewish people. From helping refugees escape war-torn streets, to combating rampant antisemitism, to providing statewide security, to educating youth with Jewish values, we are helping our global family receive the support they need.

Every single person, no matter their background, has the blessing and responsibility to nurture and sustain our collective future. As a supporter of the Federation, you are part of the unbroken chain of our ancestors who collectively care for the needs of the Jewish people and building a vibrant Jewish future. **You are helping tackle the most important issues of the day. Today. Tomorrow. Always.**



Our area day school students are among the dreamers and doers.

You are part of the tapestry of dreamers and doers.

By combining your donations with gifts from thousands of others, you have the kind of impact that few can have on their own – right next door, in Israel, and around the world. Here are a few examples* of the work you make possible through MJF and our local, national, and overseas partners.

*Examples from 2022 (January-December) or Fiscal Year 2023 (July 2022-June 2023)



Tackling increased antisemitism



Within 24 hours of discovery the Federation was on the scene educating about how to address antisemitism on campus.

IT'S MOMENTS LIKE THIS

MJF responded to **101 antisemitic incidents** in Wisconsin. This reflects a 494% increase since 2015.



With Holocaust and other genocide education now mandated in state schools, the Nathan and Esther Pelz Holocaust Education Resource Center expanded its lessons to **96,075 children and adults**.



Jewish Museum Milwaukee educated 3,000 students, 90% of whom are not Jewish, about the Jewish journey.



Trained 840 Northwestern Mutual executives and Harley-Davidson employees on antisemitism and the Holocaust. Also introduced a new program to business leaders on how to include Judaism in corporate DEI programs.





Enhancing the security of Jewish Wisconsin

MJF's security team on site for training at Hillel Milwaukee.



MJF is dedicated to enhanced security across the state, with 1,700 individuals across 23 organizations trained by our professional security team.



IT'S MOMENTS LIKE THIS

28 synagogues received MJF grants for security guards to cover the High Holidays and other large gatherings throughout the year.

Secured \$1.3 million in federal security grants for 10 organizations in Wisconsin, in turn being able to use donor dollars for other critical needs in the community.

MJF provided cybersecurity awareness testing and training to **420 employees from 8 Jewish organizations throughout Milwaukee and Madison**. Additional training will be expanded throughout the state.

Supporting our Jewish homeland



Award-winning author and Tablet journalist Matti Friedman helped Jewish Milwaukee understand the current political structure in Israel.

Bringing our community together.

IT'S MOMENTS LIKE THIS



\$1,250,000 granted to 950 victims of terror in Israel to recover and rebuild, carried out by the Jewish Agency for Israel, and many times within 24 hours.



600,000 Israelis benefitted from programs supporting religious pluralism in Israel, through MJF programs such as Olim Beyahad, which supports new Ethiopian immigrants integration into Israel's workforce.



MJF supported **hundreds of Jewish college students and young adults** experience Israel for the first time through Birthright Israel.



Heading into its 55th year, our shlichut program (Israel engagement emissaries) that is funded through our partnership with the Jewish Agency for Israel, is the oldest continuous program in the U.S.

TODAY. TOMORROW. ALWAYS.

Enhancing Jewish life in Milwaukee



The Weinstein 8 cohort in Israel.



NextGen MKE's premier George Weinstein Fellowship cohort celebrated 16 graduates who are now each volunteering for a local Jewish nonprofit organization.

IT'S MOMENTS LIKE THIS



534 students were educated at our K-8 partnership schools, which includes Bader Hillel Academy, Milwaukee Jewish Day School, and Yeshiva Elementary School.



Over 1,200 children and teens attended summer camp at the Camp Interlaken JCC and Rainbow Day Camp. It is shown that past campers are 25% more likely to donate to Jewish philanthropy. (source: Foundation for Jewish Camp)



More than 1,500 seniors attended Ovation Communities Adult Day Services program for classes, clubs, support, and wellness groups.



Over 70 attendees from 35 diverse Jewish organizations helped MJF launch the Jewish Community Study, which will guide informed, data-driven decisions about programming, resource allocation, goals, and the impact of our collective efforts.



Caring for Jews
everywhere they live



111 Ethiopian Jews
immigrated to Israel
with the support of
Milwaukee Jewish
Federation's partner
agency, The Jewish
Agency for Israel.

IT'S MOMENTS LIKE THIS



20+ million hours of home health care provided to vulnerable Jews living in the former Soviet Union.



Over 71,000 individuals received social service support each day in Europe, Asia, Africa, and Latin America.



76,261 people made aliyah to Israel and made it their home in 2022, the highest number in a single year since 1999.



Within the first three weeks of the earthquake in Turkey, Federations and partners at the American Joint Distribution Committee supplied 23,285 meals and 10,000 thermal blankets.

Today. Tomorrow. Always.

Joan Lubar

Chair, Milwaukee Jewish Federation

Susan Angel Miller and Max Rasansky

Annual Campaign Chairs

Tanya Arbit

Women's Philanthropy Chair

Rebecca Guralnick

Women's Philanthropy Campaign Chair

Andrea Schneider

Chair, Jewish Community Foundation

Miryam Rosenzweig

President and CEO

Julie Schack

Chief Development Officer

Mitch Moser

Executive Director, Jewish Community Foundation

Milwaukee Jewish Federation

1360 N. Prospect Avenue, Milwaukee, WI 53202

[MilwaukeeJewish.org/Give](https://www.milwaukeejewish.org/give)

414-390-5700

On the cover: Academic excellence and Jewish values guide students in our day schools.



MILWAUKEE
JEWISH FEDERATION